

The PCLinuxOS magazine

Volume 118

November, 2016



*Google Drive On Linux:
Little More Than Homebrew Solutions*

*GIMP Tutorial:
Create Abstract Glass Art*

*PCLinuxOS Family Member
Spotlight: dougmack*

*Running Silent Hill 2 DC
on PCLinuxOS*

LibreOffice: Calc Shortcuts

*Tip Top Tips: Send Email From The
Command Line With Sendmail Using
A Gmail Account*

Game Zone: ZeGame

*Testimonial: From Distro To Distro To
PCLinuxOS ... Or How I Quit Hopping*

*ms_meme's Nook: Thanks To The
Guys & Gals Of PCLOS*

PCLinuxOS Puzzled Partitions

And more inside ...

Table Of Contents

- 3 *From the Chief Editor's Desk*
- 4 *Google Drive On Linux: Little More Than Homebrew Solutions*
- 8 *Screenshot Showcase*
- 9 *ms_meme's Nook: Thanks To The Guys And Gals Of PCLOS*
- 10 *PCLinuxOS Recipe Corner*
- 11 *Revisiting Using Kanban on PCLinuxOS: Installing Kanboard*
- 20 *Running Silent Hill 2 DC On PCLinuxOS*
- 21 *Screenshot Showcase*
- 22 *Tip Top Tips: Send Email From The Command Line
With Sendmail Using A Gmail Account*
- 23 *Testimonial: From Distro To Distro To PCLinuxOS ...
Or How I Quit Hopping*
- 24 *Screenshot Showcase*
- 25 *PCLinuxOS Family Member Spotlight: dougmack*
- 26 *ms_meme's Nook: I Survived*
- 27 *Game Zone: ZeGame*
- 28 *Screenshot Showcase*
- 29 *GIMP Tutorial: Create Abstract Glass Art*
- 31 *Screenshot Showcase*
- 32 *PCLinuxOS Bonus Recipe*
- 33 *LibreOffice: Calc Shortcuts*
- 37 *Screenshot Showcase*
- 38 *PCLinuxOS Puzzled Partitions*
- 41 *More Screenshot Showcase*

The **PCLinuxOS** magazine

The PCLinuxOS name, logo and colors are the trademark of Texstar.

The PCLinuxOS Magazine is a monthly online publication containing PCLinuxOS-related materials. It is published primarily for members of the PCLinuxOS community. The magazine staff is comprised of volunteers from the PCLinuxOS community.

Visit us online at <http://www.pclosmag.com>

This release was made possible by the following volunteers:

Chief Editor: Paul Arnote (parnote)

Assistant Editor: Meemaw

Artwork: Sproggy, Timeth, ms_meme, Meemaw

Magazine Layout: Paul Arnote, Meemaw, ms_meme

HTML Layout: YouCanToo

Staff:

ms_meme

loudog

Meemaw

YouCanToo

Gary L. Ratliff, Sr.

Pete Kelly

Daniel Meiß-Wilhelm

Antonis Komis

daishi

Smileeb

Contributors:

Agent Smith

MBantz

horusfalcon

kvonlinux

The PCLinuxOS Magazine is released under the Creative Commons Attribution-NonCommercial-Share-Alike 3.0 Unported license. Some rights are reserved.
Copyright © 2015.



From The Chief Editor's Desk ...

November is the time for lots of things in the U.S. And, no, it doesn't mean the start of the Christmas shopping season. Retailers began rolling out Christmas merchandise right around the Labor Day weekend, which is at the end of August and beginning of September.

November is when Daylight Savings Time (DST) ends throughout much of the U.S. This year, DST comes to an end on November 6, at 2 a.m. (as if many of us are up at that hour to change our clocks, anyway). Don't forget the old saying, "Spring forward, Fall back" to remember to turn your clocks back one hour before heading off to bed on November 5. Otherwise, you'll lose that extra hour of sleep that was robbed from you on March 13, when DST began.



November is when Fall really hits, as temperatures drop as much as the leaves from the trees. The hours of daylight become shorter the nearer we get to the Winter solstice (December 21). For my wife and me, it means that it's dark when we go to work, and dark when we come home. Were it not for the windows in the hospital, we'd never see the sun.

November, around my neck of the woods (Missouri), means that the rifle Fall hunting season for deer is close at hand. Deer hunting by archery methods has already been going on since September 15, and goes until January 15, 2017. Rifle hunting season is only a short 10 or 11 days, starting November 12. Bet you can't guess where I'll be that weekend, huh? I've already been out in the woods on four separate occasions already, hunting with archery methods. Due to other commitments, each trip has been only for a few hours at a time.

Towards the end of the month, Americans celebrate Thanksgiving. Originally rooted in lore surrounding the first Fall harvest (or lack thereof, depending on your reference source) of the first permanent English settlement in North America, it's more of a time for Americans to express thanks for the things in their life that they are thankful for.

For me, I'm thankful for the wonderful family we have built. I have a wonderful, supportive and loving wife (Laura), and two healthy, awesome children ... Ryan and Lexi. In a broader sense, I'm thankful for my decent job, having a decent home, and relatively good health. At my job at the hospital, I see so many who are so much less fortunate, on a daily basis.

Closer to the computing world and this magazine, I'm thankful for all that Meemaw and YouCanToo do to help with the magazine every month. I'm thankful for all of the magazine's contributors, regardless if

they are one time contributors, semi-regular contributors, or regular monthly contributors. I'm thankful for our packagers and Texstar for creating and maintaining PCLinuxOS, without whom none of this would be possible.

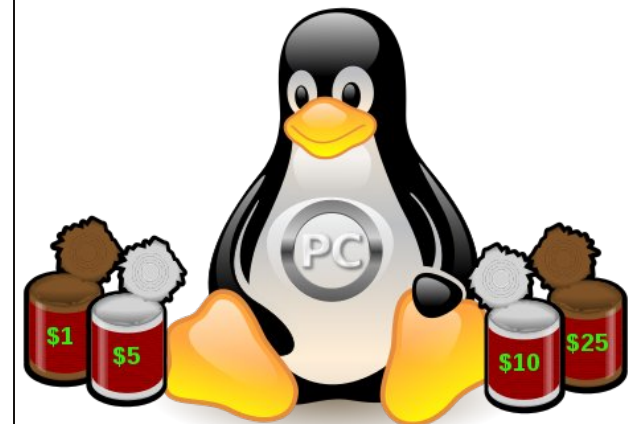
Until next month, I bid you peace, happiness, serenity and prosperity.

Donate To PCLinuxOS

*Community Supported.
No Billionaires/Millionaires.
No Corporate Backing Or Funding.*

*Click [here](#) to make a one-time donation
through Google Checkout.*

*Or, click one of the amounts down below
to make a monthly, recurring donation.*



Google Drive On Linux: Little More Than Homebrew Solutions

by Paul Arnote (parnote)

WAAAAAY back, in 2012, Google launched its cloud storage product, aptly named Google Drive. The launch was accompanied by Windows and Mac clients that allowed Google Drive to function on those desktop computers much in the same manner as Dropbox does. However, Linux users were told to “hang tight” because they were working on a Linux desktop client. Well, nearly 4 ½ years later, Linux users are *still waiting*, still “hanging tight.”

Google Drive is a collection point for all of your images uploaded to Google Photos, as well as all of your documents from Google Docs, plus any “other” files you upload for safe keeping to the Google Drive cloud.

It’s beginning to look as if the “do no evil” folks at Google have passed Linux users right on by ... once again. Thankfully, as is so ingrained in Linux’s DNA, the Linux community has pulled together and created largely homegrown, homebrew solutions.

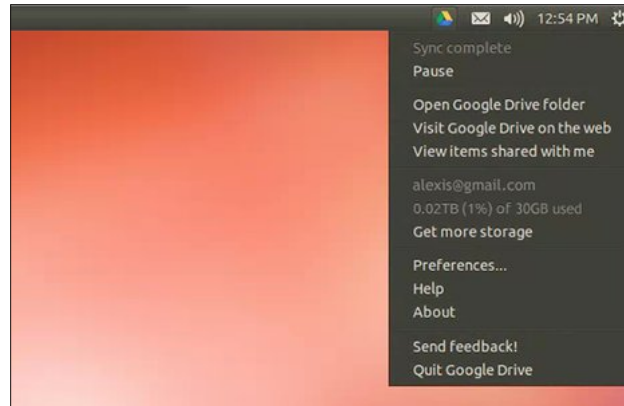
I’m not going to try to sell you on using Google Drive. Google has made its bed, and they must now lie in it. I fully realize that there are strong feelings towards Google, both for and (mostly) against among Linux users. So, if you are inclined to use Google’s products and services, this article will have relevance for you. But, if you are one of the many who choose to avoid the use of Google products and services, then I doubt you’ve even read this far. In fact, I’d be surprised if you read beyond the headline.

Background

Shortly before the launch of Google Drive, Google replaced the operating system on all of their computers running Windows with a custom, in-house version of Ubuntu Linux, often referred to as Goobuntu.

Despite the fact that almost the entire backbone of Google is run on Linux, it remains a mystery as to why Google continues to ignore Linux and Linux users. In other words, Google uses Linux to make nearly all of its profits, but refuses to give anything back to the Linux community.

It has come out that Google does, indeed, have a Linux version of the Google Drive desktop client. Let’s look at the proof, as evidenced in a February 15, 2015 [article](#) by Chris Hoffman for PC World magazine.



First, included in the screenshot directory for the 2014 release of the desktop client for Mac are two images (setup_taskbar_lin.png, first image, and setup_drive_folder_lin.png, second image) that are very obviously depicting the desktop client running on Linux.



Next is a comment on a Reddit forum [topic](#) that reads like this:

[–]popeydc 300 points 9 months ago

I was chatting to a Google employee a while back who was surprised to hear the Google Drive client he uses internally on Linux hadn't been released publicly. So (if his comment is to be believed) they have a Google Drive desktop client for Linux, [but they] just haven't released it.

Other commenters go on about how Google doesn't want to provide support for the Google Drive desktop client for Linux. That is, until one commenter points out that Google doesn't provide support for most of their other products, either. Without a doubt, that commenter hit a nerve, because even I have noticed that support for Google's other products is minimal at best.

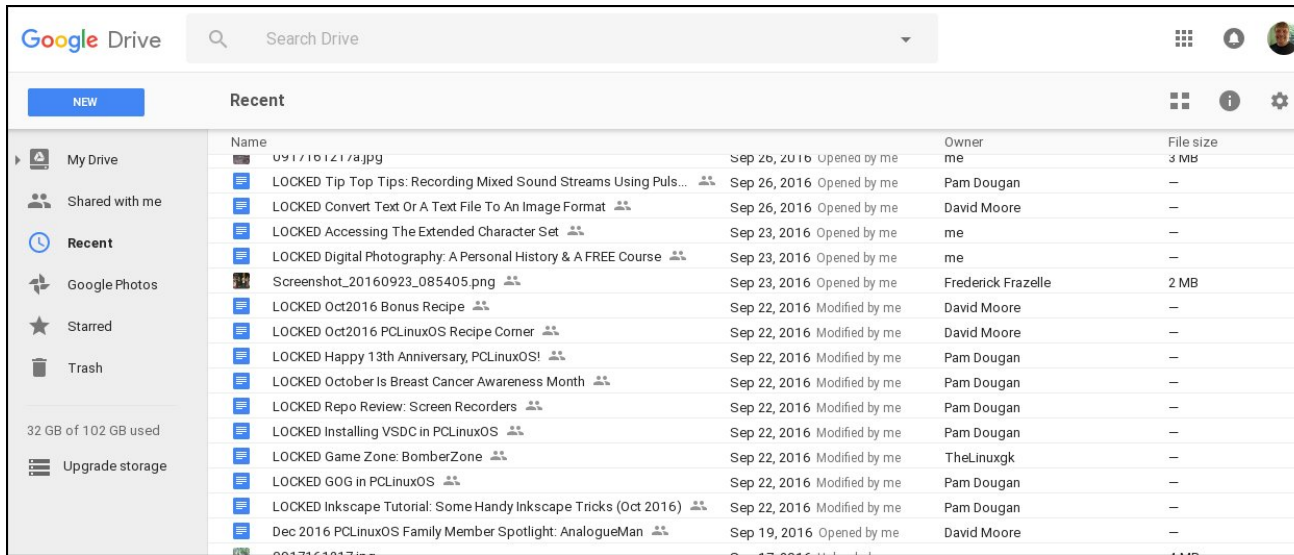
So, what's a Linux user to do?

Use the web interface

From Day One, this has been the ONLY way that I've ever accessed Google Drive. Why? Because nothing else was available. Just point a browser tab to <https://drive.google.com>, and you'll have access



Google Drive On Linux: Little More Than Homebrew Solutions



browser into your terminal session, where it is awaiting the input of the code. As soon as you do this, the sync between Google Drive and your selected directory will start. Depending on how much data you have stored on Google Drive, this could go fairly quickly, or it could take quite a while. On my Google Drive account, I would have to leave it to run overnight, since I use my Google Drive for the production of the magazine. Yes, I have a LOT of files stored there (most are related to the magazine production).

On subsequent uses, things are much, much easier. Simply launch your terminal, switch to your GoogleDrive folder, and issue the command **grive**.

There are a couple of things that Grive2 cannot do. First, it cannot automatically sync your folders and Google Drive. Second, it cannot automatically convert your Google Docs documents to *.doc, *.docx, *.odt, etc.

to all of your files, documents and images stored in Google Drive.

It's as easy as pie to use. Press on the "New" button in the upper left corner, and select the task you want to complete. But all of your work must be done in a browser window.

Install Grive2 from the PCLinuxOS repo

Grive2 was recently packaged and sent to the PCLinuxOS repository. GUI-only users won't be happy, because Grive2 is a command line utility. Don't let that turn you off, because Grive2 is very easy to use from the command line.

Using Grive2 is fairly simple. On its first run, there are a few things you will need to do to set it up.

First, make a directory in your /home directory for your Google Drive files. I call mine GoogleDrive, but you can call it whatever you want.

Next, issue the command **grive -a**. Keep your terminal window open, and copy the link provided

into your browser. That link will open and ask for permission to connect to your Google Drive account. Select "Allow" and copy the provided code from your

```
[parnote-toshiba@localhost ~]$ grive --help
Grive options:
-h [ --help ]           Produce help message
-v [ --version ]       Display Grive version
-a [ --auth ]          Request authorization token
-p [ --path ] arg      Root directory to sync
-s [ --dir ] arg       Single subdirectory to sync (remembered for next runs)
-V [ --verbose ]       Verbose mode. Enable more messages than normal.
--log-http arg         Log all HTTP responses in this file for debugging.
--new-rev              Create new revisions in server for updated files.
-d [ --debug ]         Enable debug level messages. Implies -v.
-l [ --log ] arg       Set log output filename.
-f [ --force ]         Force grive to always download a file from Google Drive instead of uploading it.
-u [ --upload-only ]   Do not download anything from Google Drive, only upload local changes
-n [ --no-remote-new ] Download only files that are changed in Google Drive and already exist locally
--dry-run              Only detect which files need to be uploaded/downloaded, without actually performing them.
--ignore arg           Perl RegExp to ignore files (matched against relative paths, remembered for next runs).
```



Google Drive On Linux: Little More Than Homebrew Solutions

The first limitation is fairly easy to overcome, even if it doesn't fully implement an immediate, automatic sync. Let's say you want to sync your GoogleDrive folder (be sure to use the name you gave the directory when you created it) at 0300 every day. Simply launch your terminal, and enter **crontab -e**. Then, enter **00 03 * * * grive --path /home/youruser/GoogleDrive/**. Of course, you will replace "youruser" with your actual username.

When I first used Grive2, I was shocked to see some *.doc, *.docx, *.xls and other "office" files show up in my GoogleDrive folder. But, upon closer examination, I discovered that these were files that I had stashed on Google Drive some time ago, for safe keeping.

You can read more about how to use Grive2 [here](#).

Use InSync

[InSync](#) is a commercial product that installs easily on PCLinuxOS by way of ready-made RPM files. It's available for Linux, Windows and Mac computers.

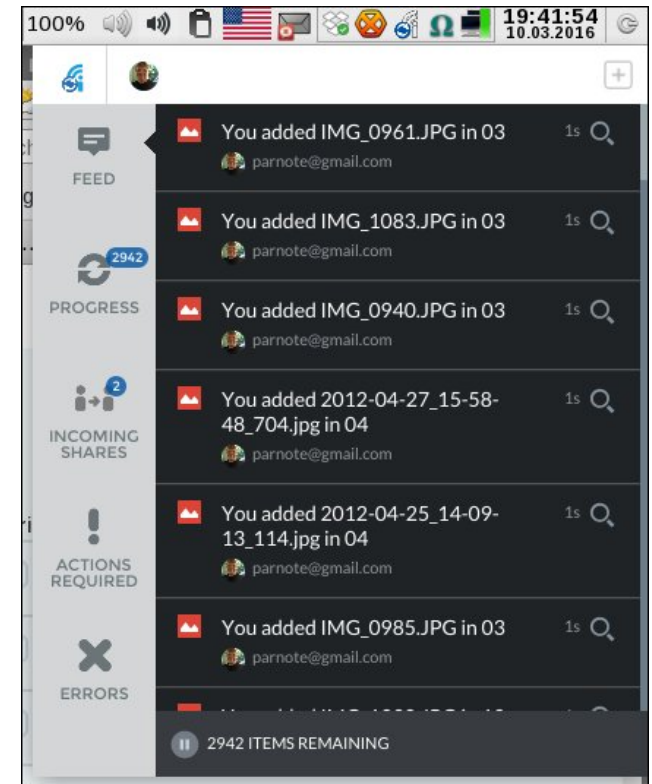
As a commercial product, it does everything you might expect for a bona fide Google Drive desktop client to do. In the next column is a snapshot from their website that lists its capabilities.

I installed it on my computer with ease and without any major issues. If you're the least bit hesitant to install from outside the official PCLinuxOS repository, you would be best advised to skip using this program. To proceed, you will first need to [download](#) the RPM file. Next, open up a terminal session, and su to root. At the root prompt, enter **rpm -ivh insync-1.3.10.36104-fc17.x86_64.rpm**. Wait for the installation to complete (it won't take but just a few seconds), then type **exit** at the root prompt. Close your terminal session. You should find InSync installed under the Internet category of your PC menu. The installer tried to also install Thunar extensions (since I use Xfce), but failed when it

So, why use Insync?		
	Insync	Drive
Multiple accounts	<input checked="" type="checkbox"/>	<input type="checkbox"/>
Convert Google Docs to Office	<input checked="" type="checkbox"/>	<input type="checkbox"/>
Convert to OpenDocument	<input checked="" type="checkbox"/>	<input type="checkbox"/>
Symlink, junction and alias	<input checked="" type="checkbox"/>	<input type="checkbox"/>
External & network drives	<input checked="" type="checkbox"/>	<input type="checkbox"/>
Non-admin Windows install	<input checked="" type="checkbox"/>	<input type="checkbox"/>
Desktop notifications	<input checked="" type="checkbox"/>	<input type="checkbox"/>
On-demand shared files syncing	<input checked="" type="checkbox"/>	<input type="checkbox"/>
Linux	<input checked="" type="checkbox"/>	<input type="checkbox"/>
Raspberry Pi	<input checked="" type="checkbox"/>	<input type="checkbox"/>
Name your own folder	<input checked="" type="checkbox"/>	<input type="checkbox"/>
Revert read-only files	<input checked="" type="checkbox"/>	<input type="checkbox"/>
Feed of file changes	<input checked="" type="checkbox"/>	<input type="checkbox"/>
MSI install	<input checked="" type="checkbox"/>	<input type="checkbox"/>
Desktop interface	<input checked="" type="checkbox"/>	<input type="checkbox"/>
Command line	<input checked="" type="checkbox"/>	<input type="checkbox"/>
Preserve directory structure	<input checked="" type="checkbox"/>	<input type="checkbox"/>
Ignore List	<input checked="" type="checkbox"/>	<input type="checkbox"/>
Awesome support	<input checked="" type="checkbox"/>	<input type="checkbox"/>

couldn't find Yum (the installer that Fedora uses) on my system.

Typically, pricing is fairly affordable. For a private user with just one Google account to sync to, the price is a one time \$25 (U.S.) fee. For a "pro user"

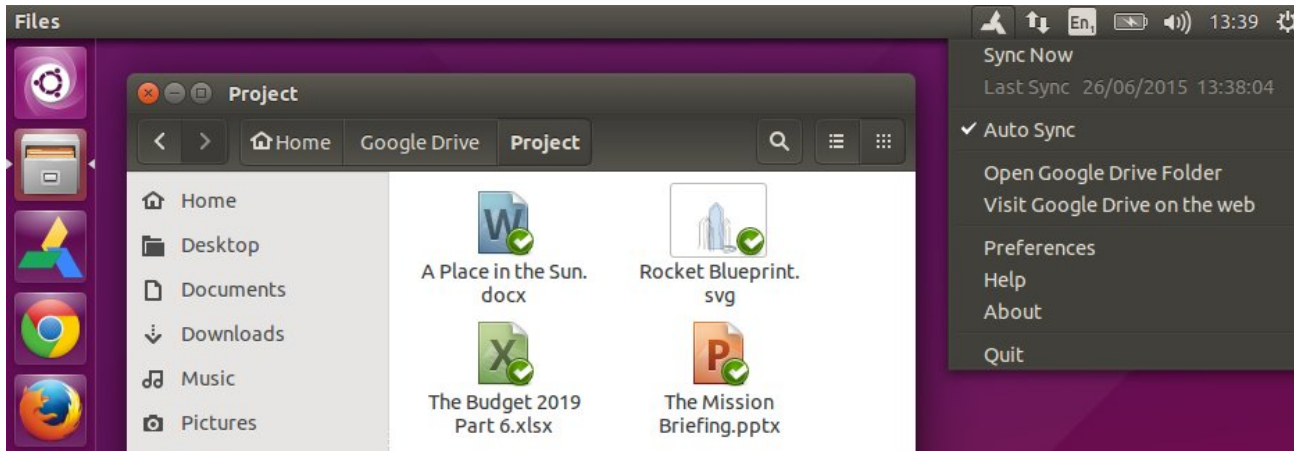


with up to three Google accounts to sync with, the price is \$25 per year. Under the "business" plan, it costs \$25 per Google account. Of course, support is faster for the pro and business plans. I, along with Texstar, were lucky and got a free private user account when InSync was running a special promotion. So, keep your eyes peeled (and keep checking back), and you might also get lucky to get a free private user account.

overGrive

[overGrive](#) was born as an Ubuntu *.ppa file, giving Ubuntu users the features on the desktop that Google promised all those years ago. However, the original grive program stopped working when Google changed their API to interface with Google

Google Drive On Linux: Little More Than Homebrew Solutions



overGrive runs in your Linux desktop's panel.

Drive. Google is notorious for doing these types of things, often without warning.

By the time that grive was “fixed” (and became the command line utility grive2 in the process), those who had made the original Ubuntu *.ppa file decided to “market” it to all Linux users. On the overGrive home page are download links for Ubuntu (obviously), a Fedora/openSUSE RPM file, and an Arch *.xz package file. A license (only one is needed per Google Drive account) will only cost you \$4.99 (U.S.).

To be honest, I haven't tried overGrive myself. However, there are plenty of reports on the internet of it working especially well. Below is a list of what overGrive can do for you (from the overGrive home page).

Auto Sync Google Drive to your computer

Auto Sync Local Files to Google Drive

Select Google Drive Folder

Select Google Drive Folders to Sync

Convert Google Docs to Office File Formats for offline editing

*Convert Office Files back to Google Docs formats ***

*Sync Multiple Accounts **

Support

** License required for each account.*

*** Conversion back to Google Docs format only for original Google Documents.*

overGrive is available for, and integrates with, the Unity, Gnome, KDE, Xfce, Cinnamon and LXDE desktops. The installation [instructions](#) for Fedora and openSUSE should work for PCLinuxOS users, with modifications – should you choose to attempt to install it. Two main modifications involve the use of sudo (PCLinuxOS does not typically use sudo), and replacing references to the Yum package manager with Synaptic.

Full detailed instructions on how to install overGrive on PCLinuxOS are well beyond the scope of this article. Instead, it is mentioned here to only alert you to its existence. Its use is entirely up to you – of course. As usual, the standard admonishment about not installing from outside the official PCLinuxOS repository applies, turning your standard PCLinuxOS installation into a non-standard installation.



drive

Drive is another command line utility to access Google Drive. Below is the initial description for drive, from its [page](#) on GitHub.

drive is a tiny program to pull or push Google Drive files.

drive was originally developed by [Burcu Dogan](#) while working on the Google Drive team. Since she is very busy and no longer able to maintain it, I took over drive on Thursday, 1st January 2015. This repository contains the latest version of the code.

The “I” who took over drive is Emmanuel T. Odeke. Drive is currently undergoing active and ongoing development on GitHub.

While not providing background sync of files stored on Google Drive, it does appear to be quite full featured – at least, according to the very, very long [description](#) on GitHub. In fact, it appears to be so full featured that it may be difficult for many to use.

I downloaded drive, but found myself unable to compile it, much less run it. It requires the use of something called “Go,” version 1.5.X or higher, according to the instructions. Perhaps compilation can be accomplished by someone with a better understanding than I possess (such as our packaging team), but doing so is definitely higher than my current pay grade.

Even after getting it successfully compiled and running, using drive will take you some time to master, with all of its options. I'm certain that there are some “shortcuts” (like commands you would use all the time) to learning how to run it, but the instructions (while thorough) are a bit overwhelming. The command line is a comforting friend to me (and becoming more comfortable as time goes on) and I'm overwhelmed by the instructions on how to run drive. I can only imagine how a GUI user who goes out of their way to avoid the command line might feel trying to use drive.

Summary

Google has continued along its long and chosen path of not supporting Linux users. This is the course they have chosen, despite using Linux as the backbone of their entire operation. "Do no evil" might as well be "do nothing for Linux users, but use Linux to make all of our profits." Is it any wonder why so many people distrust Google? I know there are other reasons for the hostility expressed towards Google, but promising and failing to deliver a Linux desktop client for Google Drive only adds to the pain, frustration, hatred and distrust.

Given the chance, Linux users and the Linux community can and will come up with their own homebrewed solutions. Other enterprising people and companies will fill in the remaining vacuum with commercial solutions.

If you're looking for a Linux desktop client to access files stored on Google Drive, you should find Grive2 and InSync adequately sufficient to fulfill your needs rather well.



PCLinuxOS-Cloud
secure private simple-to-use
Sign up TODAY! pclosusers.com/services-signup.php


Screenshot Showcase



Posted by OnlyHuman, on October 8, 2016, running e17.



ELECTRONIC FRONTIER FOUNDATION
DEFENDING YOUR RIGHTS IN THE DIGITAL WORLD



The PCLinuxOS Magazine
Created with Scribus

Donate NOW



gofundme

ms_meme's Nook: Thanks To The Guys And Gals Of PCLinuxOS

To guys and gals who help PCLinuxOS be the best!
Your hard work makes it better than all the rest!
THANK YOU!

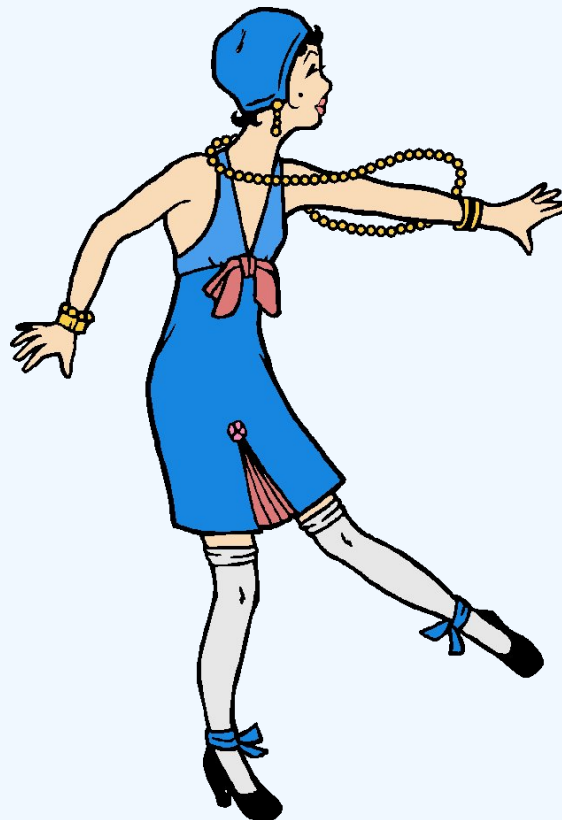
More than two more than five
they keep the OS alive
Has anybody seen those guys

Working hard every day
never ever get no pay
Has anybody seen those guys

Now if you run into
these special geeks
tell them thank you

They all work
for weeks and weeks
doing just what they do

We love them 'cause they choose
to fix all of our boo boos
Has anybody seen those guys



More than two more than five
every file they test drive
Has anybody seen those guys

Working hard every day
doing it the Linux way
Has anybody seen those guys

Now if you run into
these special friends
tell them thank you

They even work
on weekends
doing just what they do

We love them 'cause they choose
to fix all of our boo boos
Has anybody seen those guys

MP3

OGG

PCLinuxOS Recipe Corner



*from the kitchen of
youcantoo*

Creamy Spinach & Sausage Pasta

Ingredients

6 oz. smoked sausage
1 Tbsp olive oil
1 medium onion
1 (14.5 oz.) can diced tomatoes w/chiles
2 cups chicken broth
8 oz. pasta
3 cups fresh spinach
1 cup (4 oz.) shredded monterrey jack
1 whole green onion

Instructions

- Thinly slice the smoked sausage and add it to a large skillet with 1 tablespoon of olive oil. Saute the sausage over medium heat until it is nicely browned (about 5-7 minutes). Drain off the excess fat.
- Dice the onion and add it to the skillet. Continue to saute until the onion has softened (about 5 minutes). Add the can of diced tomatoes with chiles and the chicken broth. Stir to combine and dissolve any browned bits off of the bottom of the skillet.
- Add the uncooked pasta to the skillet and make sure it is all submerged under the liquid. Place a lid on the skillet and allow the mixture to come up to a boil. Once it reaches a boil, turn the heat down to low and let it simmer for about ten minutes, or until

the pasta is tender. Stir once or twice while the pasta cooks to keep it from sticking.

- Stir in the fresh spinach, one cup at a time, until wilted. If you add it all at once, the skillet will be too full to stir. Keep the heat on while adding the spinach, so the liquid will continue to simmer and thicken.
- Sprinkle the shredded cheese on top, replace the lid, and let it sit for a few minutes, or until the cheese is melted. Slice the green onions and sprinkle them over top. Serve hot!

Serves: 4



Donate NOW



gofundme

Want To Help?

Would you like to help with the PCLinuxOS Magazine? Opportunities abound. So get involved!

You can write articles, help edit articles, serve as a "technical advisor" to insure articles are correct, create artwork, or help with the magazine's layout.

Join us on our [Google Group mailing list](#).

Chat with PCLinuxOS users



from all over
the World.

**Sign up
TODAY!**

PCLOS-Talk

<http://pclostalk.pclosusers.com>



Revisiting Using Kanban On PCLinuxOS: Installing Kanboard

by horusfalcon

During a recent fresh installation of PCLinuxOS, I had occasion to install Kanboard again, so I opened the September 2016 Issue where this article was originally published. In following my own instructions, I found a couple of items that needed to be revised, so here I am. I apologize for any confusion my errors may have caused.

DISCLAIMER: Kanboard is not a part of the official PCLinuxOS software repository. As such, you should not expect official support for it via the PCLinuxOS forums. If I see someone needing help, I'll do my best, but there are no guarantees expressed or implied with regard to its use.

PART I: WHAT IS KANBAN?

So what is Kanban, anyway? The word is Japanese for “billboard”. The history of Kanban started with Toyota Motor Corporation. From there it has become an accepted part of lean manufacturing processes in businesses the world over.

Briefly, Kanban is a simple inventory control/project management tool that uses objects (task or signal cards) to track parts status and critical processes of a project.

Originally, Kanban used a tracking board (a corkboard, typically) on which signal cards were moved from one status lane to the next to indicate movement through the workflow. These, in turn, triggered the generation of Kanban cards that tell each supplier in the workflow when to have parts or subassemblies ready for their downstream customers.

A typical Kanban board is shown below with a few simple tasks (Figure 1: image courtesy of <https://kanboard.net/>).

A much more technical (and more accurate) description of Kanban is given at:

<https://en.wikipedia.org/wiki/Kanban>

for any who are interested.

The screenshot shows the Kanboard interface for a project named "KB Demo Project". The interface includes a navigation bar with "Actions", "Board", "Calendar", and "List" views, and a search filter set to "status:open". The main board is divided into four lanes:

- Backlog (1):** Task #1: "Improve the Kanboard documentation" (Documentation, 0% progress, assigned to Nobody).
- Ready (3):** Task #3: "Make a new dashboard" (Improvement, 8 items, assigned to Demo Admin); Task #5: "Add awesome features" (New Feature, 21 items, assigned to Nobody); Task #4: "Deploy FreeBSD 10.1 in prod" (Sysadmin, assigned to Nobody).
- Work in progress (2/3):** Task #2: "Fix issue with the API" (Bug, due Jan 31, assigned to Demo User #2); Task #14: "Prepare new release" (assigned to Demo Admin).
- Done (1):** Task #15: "Write blog article about Kanboard" (due Jul 30, assigned to Nobody).

Revisiting Using Kanban On PCLinuxOS: Installing Kanboard

As the information age matured, physical cards were replaced with software triggers and email notifications, but the principles remain the same. Electronic kanban boards are also good graphical representations of project status.

My tribulations in getting Kanboard to run are in this thread: [Kanboard on PCLinuxOS](#). It's not necessary to read it unless you want to subject yourself to every step of my journey to install Kanboard on my PCLinuxOS-powered laptop. Fortunately, I have learned enough along the way that your journey to get Kanboard working should be much easier going than mine was.

So... **why do I use Kanban?** I've adopted and adapted it as a focus tool to help me control the flow of writing projects on which I'm presently working. This has different working principles than more orthodox Kanban does as I'm the sole supplier and customer, but it helps me stay focused on what's next to be done, and (especially) where interdependencies exist in my work. It has helped me meet deadlines, and that's the most important thing. When I first learned there was an application for creating and maintaining an electronic Kanban board in Linux, I knew I had to get it working.

If your business or even your personal projects could benefit from the type of tracking Kanban provides, the solution is at hand. Meet Kanboard.

PART II: DOWNLOADING KANBOARD:

Kanboard is a web-based Kanban board application written in PHP. It can be found at:

<https://kanboard.net/downloads>

Once on the Kanboard website, look around. There is a comprehensive set of documentation, plugins (which I've not tried yet) to enhance its functionality, news about Kanboard's development, and other great resources for Kanboard users.

Download the latest stable version of Kanboard from the website, and save it somewhere you'll be able to find it for later use.

PART III: MEETING THE SYSTEM REQUIREMENTS:

Hardware-wise, any system that can run PCLinuxOS and has reasonably good display resolution should be able to run Kanboard. There are, however, some software prerequisites that must be installed prior to installing the Kanboard software. For PCLinuxOS, these have been made very simple.

The system requirements for Kanboard are listed at:

<https://kanboard.net/documentation/requirements>

The Kanboard website lists several non-PCLinuxOS distributions of Linux as being compatible. I can personally vouch for the compatibility of PCLinuxOS as well.

NOTE: Before adding any packages from the repository or installing software from an archive, it is always a good idea to ensure your PCLinuxOS system is fully updated. Instruction for how this is done may be found at:

http://pclinuxoshelp.com/index.php/Update_Your_PCLinuxOS

PCLinuxOS has made meeting all the software requirements for Kanboard truly easy. Open Synaptic Package Manager, give the root password when prompted, and install task-lamp. This will install and configure a web server (Apache), a database (MySQL), and PHP5 all in the same operation. It will also set up the locations to which Kanboard should be unpacked.

NOTE: It is best to install task-lamp on a freshly installed PCLinuxOS system, but so long as you have not previously re-configured PHP or MySQL, installing task-lamp will get you where you need to be in one step.

PART IV: INSTALLING KANBOARD:

Here's where we do something with that archive file downloaded in Part II. First, as root, copy the archive file to /var/www/html/. You will need to be root to be able to write to that folder. To do the copying using a shell session, do:

```
[username@localhost ~]$ su
Password: {key in the root password here and press Enter.}
[root@localhost username]# cp /path-to/kanboard-1.0.34.zip
/var/www/html/kanboard-1.0.34.zip
```

NOTE: the placeholder "username" above will be replaced with your user name. The placeholder "/path-to/" will be replaced by the actual path where the archive file is stored. The actual file name used should be that of the latest stable version of Kanboard (which, as of this writing, is 1.0.34.)

If you are more comfortable working from a root-enabled file manager, by all means use the tools that suit you best. The important thing here is to place the file in the folder /var/www/html/.

Revisiting Using Kanban On PCLinuxOS: Installing Kanboard

Once the archive is copied, give the following shell commands as root to unpack the archive:

```
[root@localhost username]# cd /var/www/html  
[root@localhost html]# unzip kanboard-1.0.34.zip
```

Fortunately, unzip is in the Synaptic repositories for PCLinuxOS, and is installed by default.

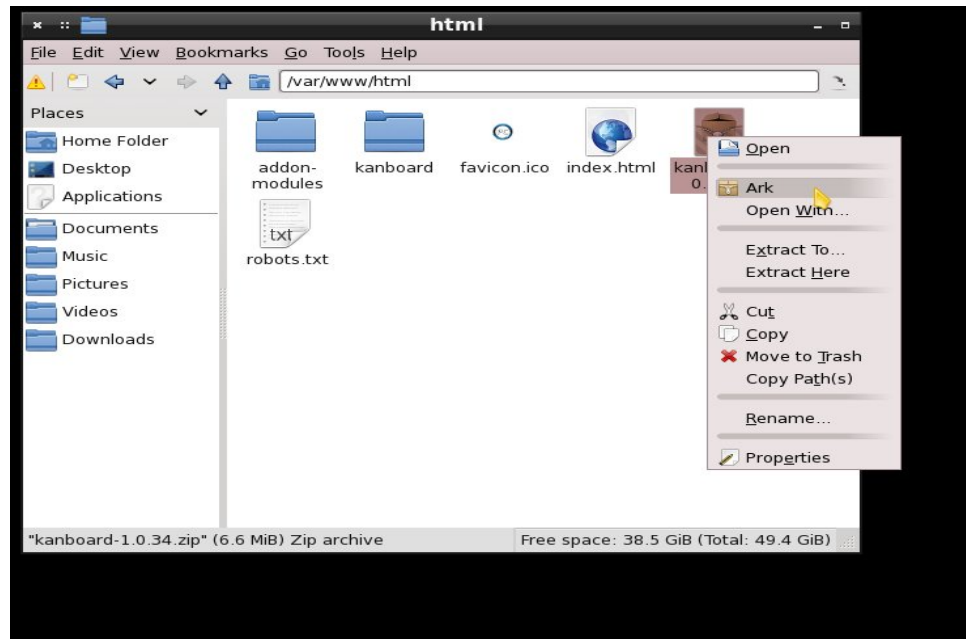
Instructions previously published used `tar -xzvf`, which only works on gzipped archives. Apparently the file format has changed with 1.0.34, and this method no longer works. If you tried this, you probably saw the following error messages:

```
gzip: stdin has more than one entry--rest ignored  
tar: Child returned status 2  
tar: Error is not recoverable: exiting now
```

The corrected instructions above work with the latest version.

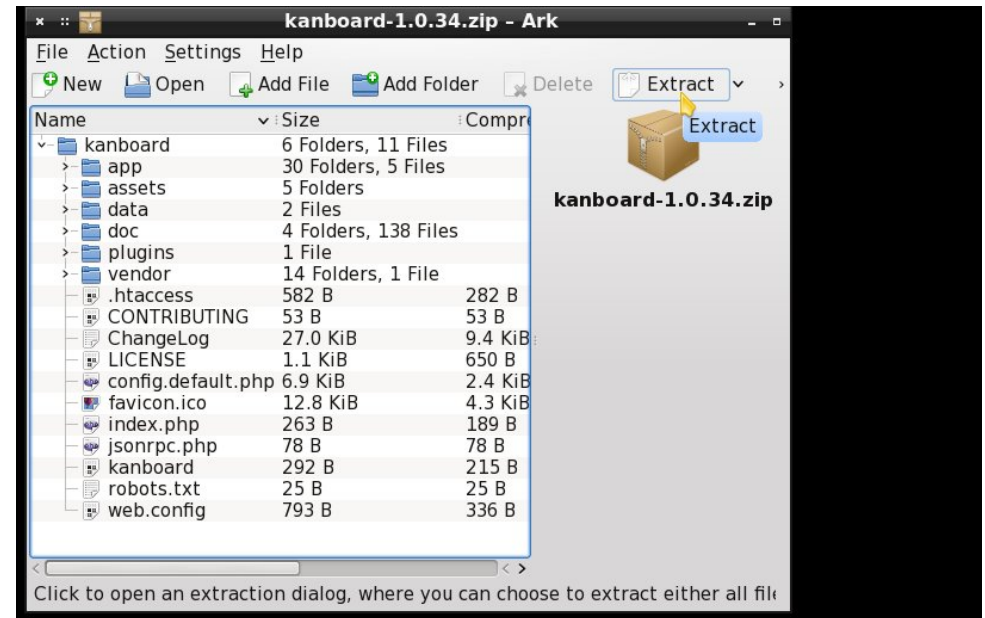
If you are more comfortable using a graphical tool to unpack the archive, it can easily be done with Ark. Open your favorite root-enabled file manager (entering your root password when prompted), and navigate to `/var/www/html/`. Right-click on the file `kanboard-1.0.34.zip`, and select Ark as shown.

(Figure 2: Using Root PCManFM to Extract the Archive)



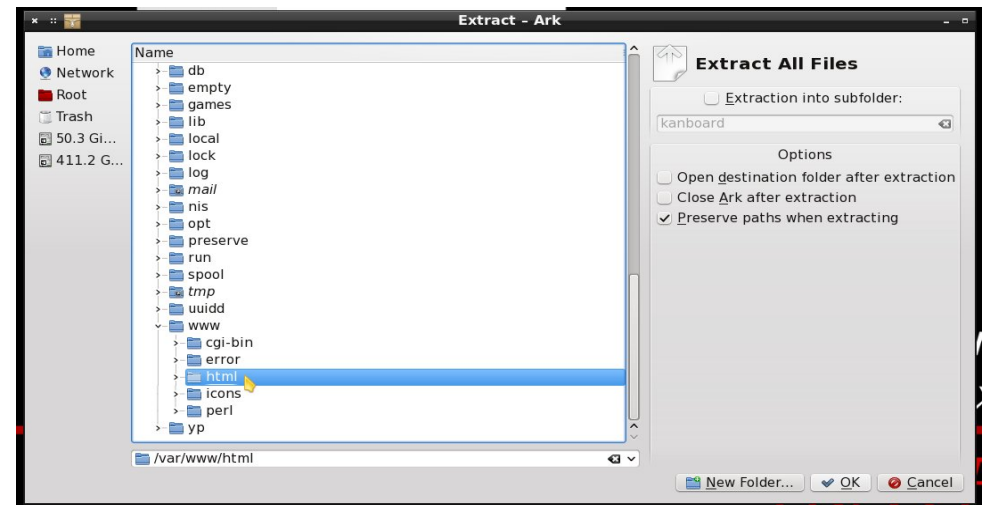
This will open Ark in a new window, showing the contents of the archive file:

(Figure 3: Ark Showing the Archive File Contents)



Click on Extract, as shown above, and a new window opens to allow you to select where to extract the file. The correct location for extraction is highlighted in the figure below:

(Figure 4: Ark File Navigation Window Showing Correct Path for Extraction)



Revisiting Using Kanban On PCLinuxOS: Installing Kanboard

If you don't see this folder, navigate to it before continuing. (Note the full path shown below the folder tree window.) Clicking OK after this folder is chosen will start the extraction process. Once extraction has completed, all windows associated with Ark may be safely closed.

At this point Kanboard is installed. To get it to run properly we must first do a little post-install configuration.

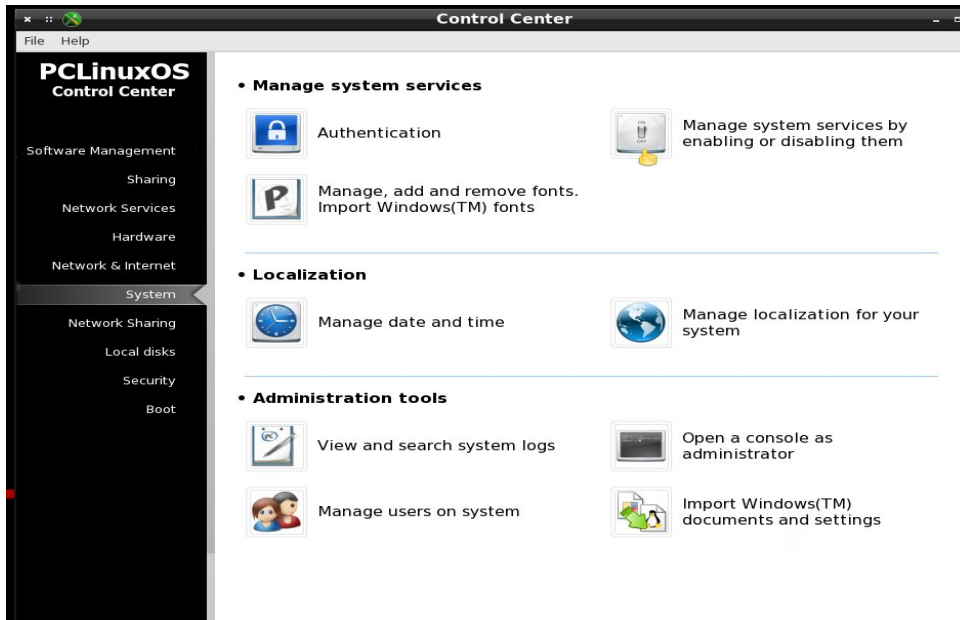
PART V: CONFIGURING PERMISSIONS FOR KANBOARD

To be able to edit projects in Kanboard, **the user must have write permissions** on the folder `/var/www/html/kanboard/data`.

The best way to accomplish this is, as root, to add the user to the group **apache**, then assign ownership of the folder `/var/www/html/kanboard/data` to the **apache** group. Finally, assign write permission to the folder's owner and group.

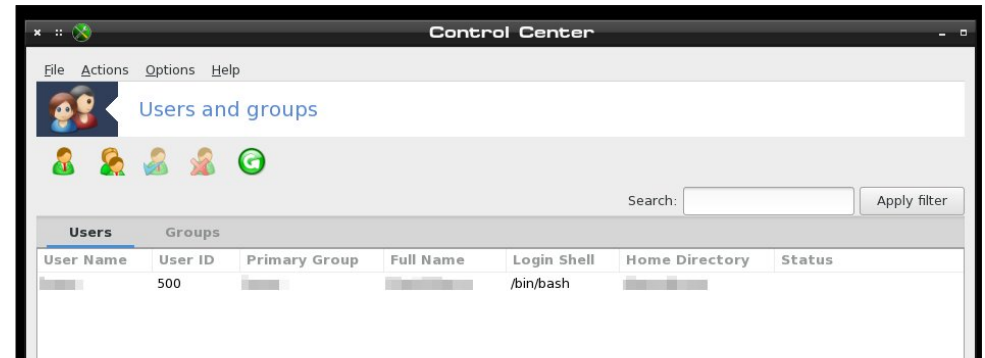
The group and user operations can be done from the PCLinuxOS Control Center very easily without recourse to a shell. Click the icon on the taskbar for Configure your Computer to start PCLinuxOS Control Center, enter the administrative (root) password when prompted, and then select System from the sidebar at left as shown.

(Figure 5: PCLinuxOS Control Center System Menu)



From the System Menu, click on Manage users on system. This brings up:

(Figure 6: PCLinuxOS Control Center Users and Groups Dialog)



NOTE: my user details are obscured above for reasons of privacy and security.

In the Users and groups dialog, click to highlight your username, then click Actions and select Edit from the drop-down menu. This will open the user's profile dialog:

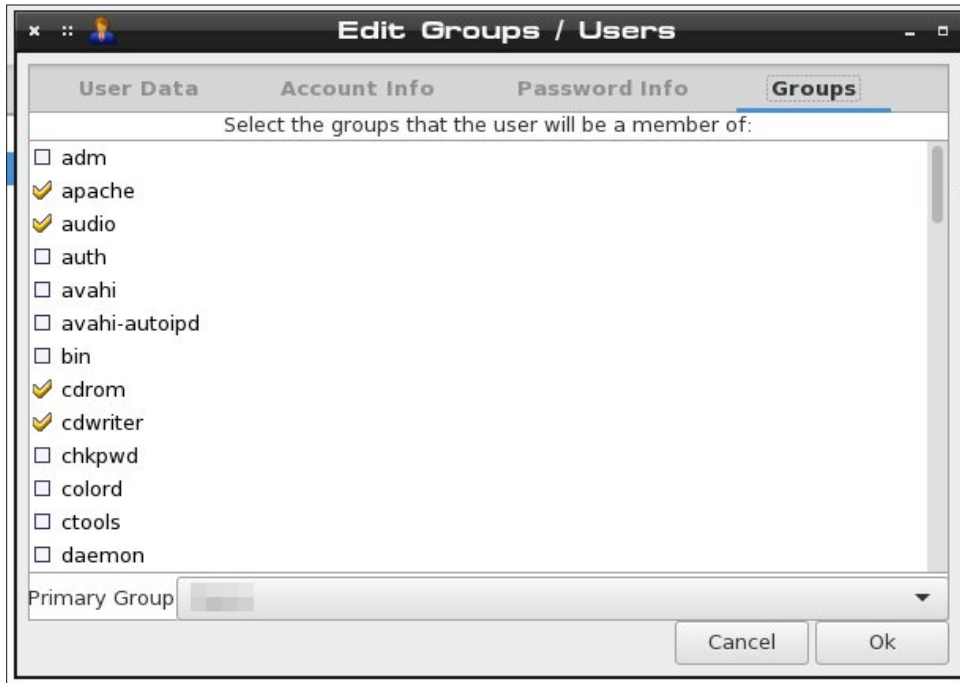
(Figure 7: Edit Groups/Users Dialog)



Revisiting Using Kanban On PCLinuxOS: Installing Kanboard

From here, click on Groups at the top right corner in the menu bar. This will open the group list for the selected user.

(Figure 8: Edit Groups/Users, showing Groups Tab)



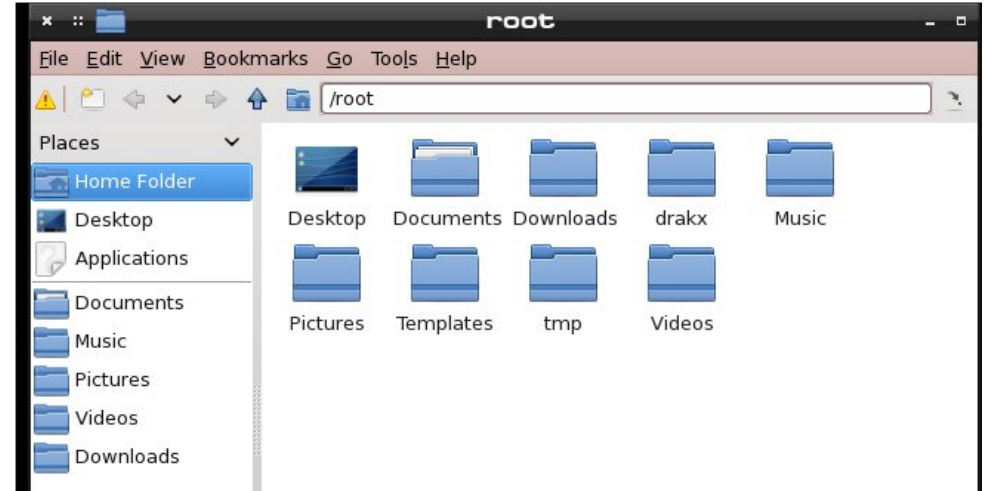
From here, click to select the group **apache** as shown above. The check mark in the picture above shows it is already selected for my user, and if this is already checked for you, no further action is needed as you are already a member of the group. If the box has no check, click it to put one there, then click Ok. This completes the user edits needed, for this user. Do the same for any other users who may need access to Kanboard, and close the Users and Groups window and the PCLinuxOS Control Center windows when done.

The assigning of permissions to the folder `/var/www/html/kanboard/data` can be accomplished easily enough **as root** by editing the properties of the folder from within any file manager (Dolphin, Caja, PCManFM, Nautilus, and others should be able to do this easily). I will show PCManFM in use in my examples to follow, as I am using LXDE for my desktop environment.

Root PCManFM is available from the PCLinuxOS start menu under File Tools from LXDE. Click to start it, and a dialog box will open requesting the

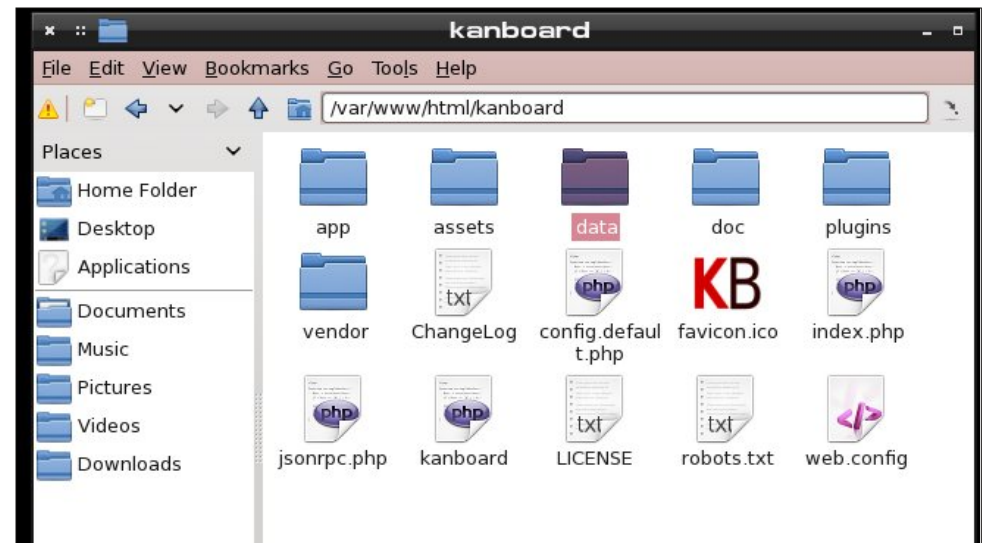
administrative (root) password. After this is entered correctly, the file manager window will open, **showing root's home folder**.

(Figure 9: Root PCManFM)



From here, click on the blue “up arrow” shown under Bookmarks in the picture above. Similar controls exist for most any file manager you might be using. The folder you wish to navigate to is `/var/www/html/kanboard/`, so that the folder `/var/www/html/kanboard/data` is displayed as an icon:

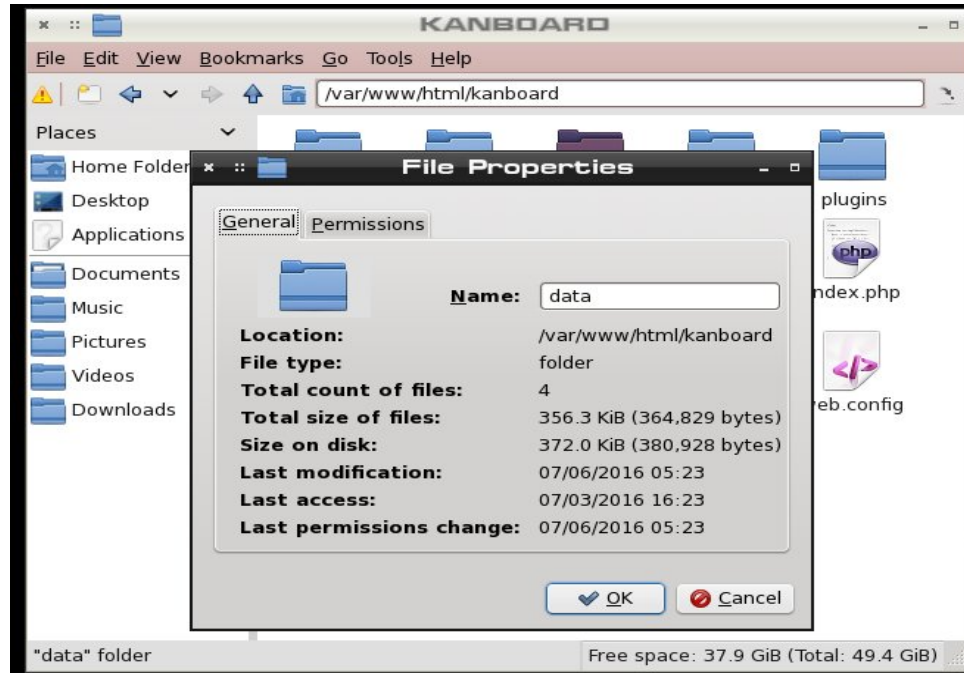
(Figure 10: PCManFM showing the data folder highlighted)



Revisiting Using Kanban On PCLinuxOS: Installing Kanboard

Right-click on the data folder icon and select Properties from the context menu. This will bring up the folder properties dialog:

(Figure 11: PCManFM showing Properties Dialog for the data folder)



Click on the Permission tab of this dialog, and it will display:

(Figure 12: Setting folder permissions)



If the values in the dialog box do not appear as shown, click, type and/or select to change them as shown. This will assign the folder to the proper owner and group (in the top section), and will grant the owner and selected group (and hence any users in that group) the proper permissions. Click OK after all selections are made, the dialog will close and all changes to the folder's permissions will be saved. Close Root PCManFM at this time (unless other actions requiring root access remain to be done).

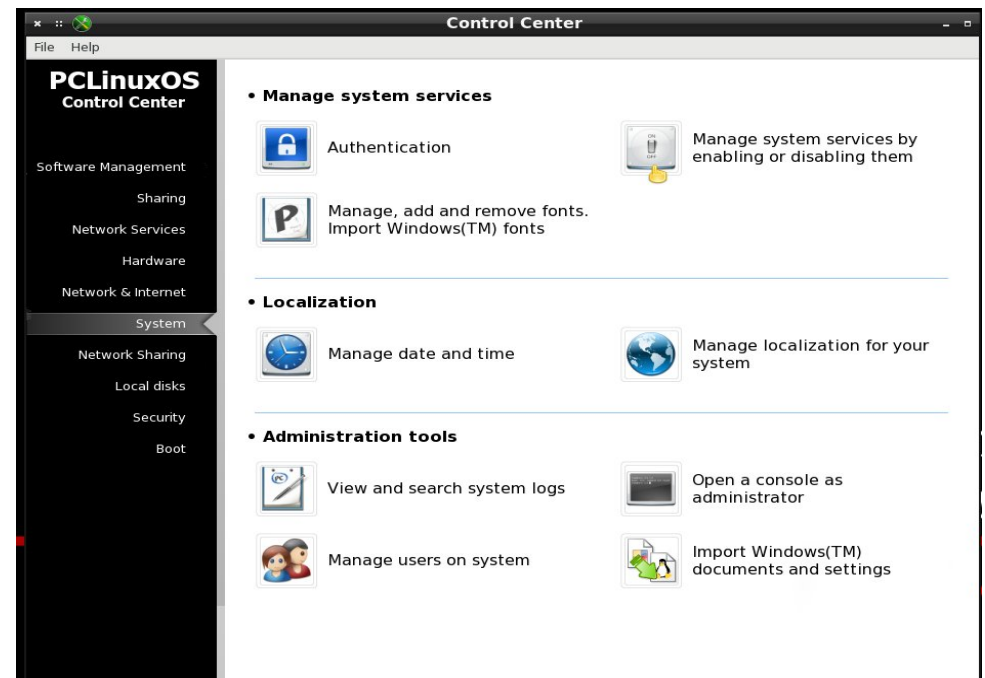
PART VI: STARTING THE WEB SERVER

This entire topic was overlooked in the previous edition of this article. It is essential to the proper operation of Kanboard.

Before attempting to use Kanboard, a working web server must be running. Apache provides httpd as the daemon which runs this server.

While it is possible to issue shell commands to start the web server, a better approach is to use PCLinuxOS Control Center. Shown below is the System Menu. Click on the icon in the upper right for Manage system services by enabling or disabling them as shown by the cursor position in the figure.

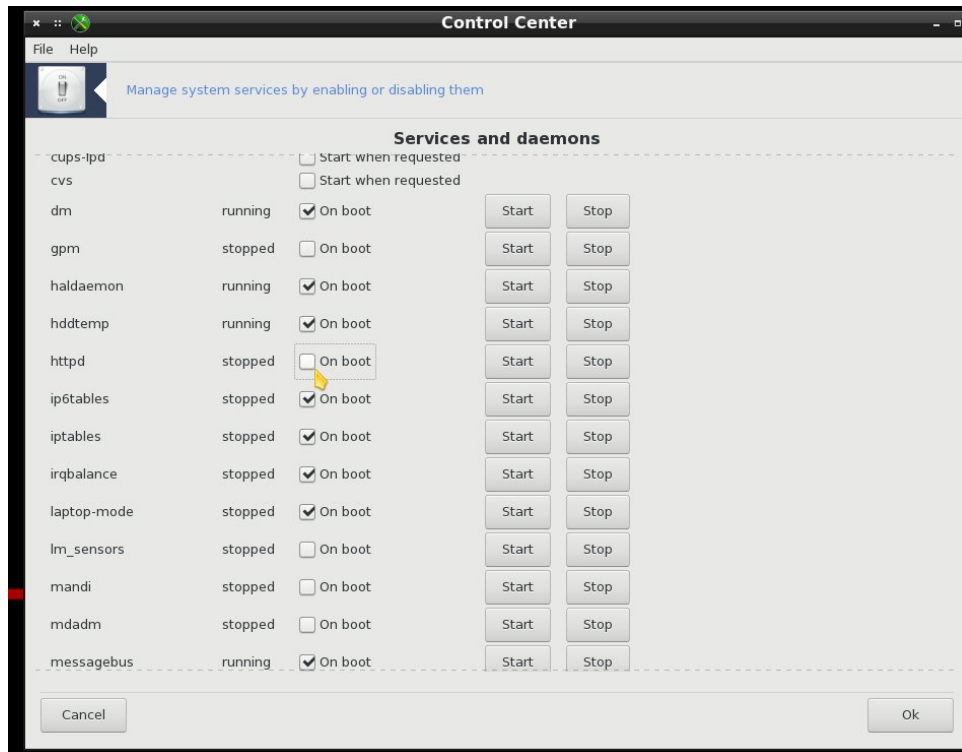
(Figure 13: PCLinuxOS Control Center System Menu)



Revisiting Using Kanban On PCLinuxOS: Installing Kanboard

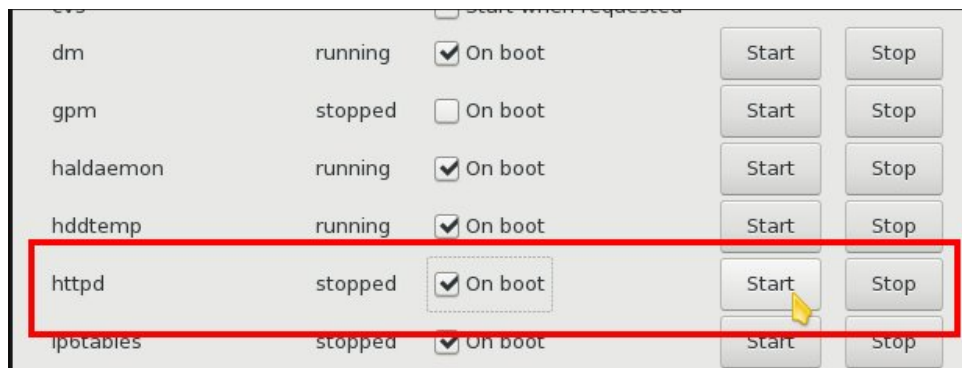
This will open the System Services window:

(Figure 14: System Services)



The cursor in this figure shows that httpd is not selected to start at boot. Click the box to put a checkmark in it. This will start the web server each time the machine starts up.

(Figure 15: Starting httpd)



The web server is still not running, as the system has not been restarted. Instead of rebooting, clicking the Start button next to httpd (shown by the cursor position) will cause it to start. At this point, once the word stopped changes to running, click the Ok button at bottom right to close this window. After that, PCLinuxOS Control Center may be safely closed.

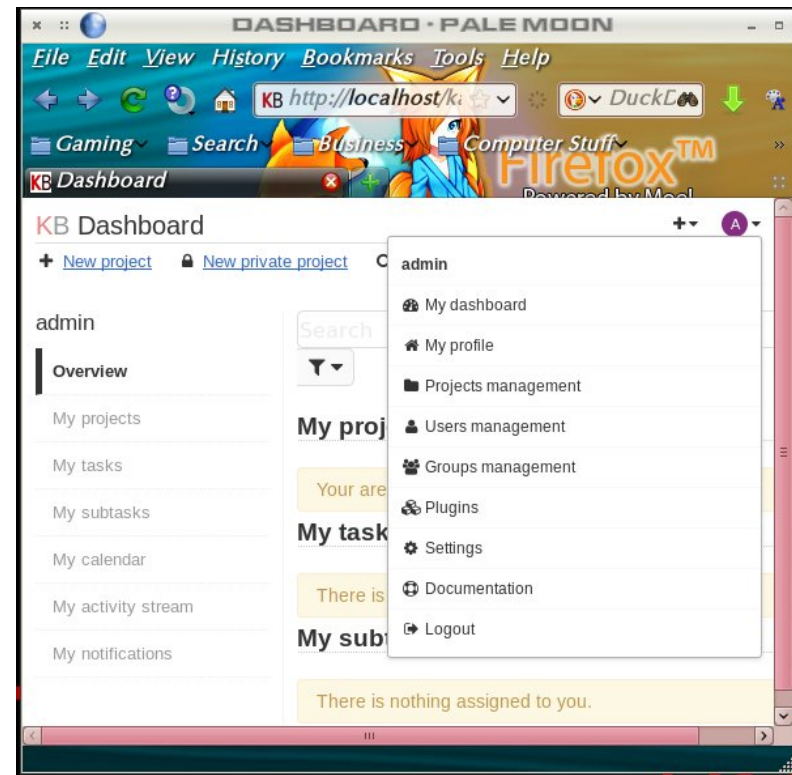
PART VII: STARTING KANBOARD

The hard work is done. To start Kanboard, open a web browser (I use Pale Moon, but Firefox, Chrome, and others should also work fine) and point your browser to:

<http://localhost/kanboard>

This will open a login dialog. The first time you log in to Kanboard, you should log in as the user **admin** with the default password **admin**, and, as your first official act, change this default to something more secure. Click the purple circle icon in the upper right to open the admin user's settings menu

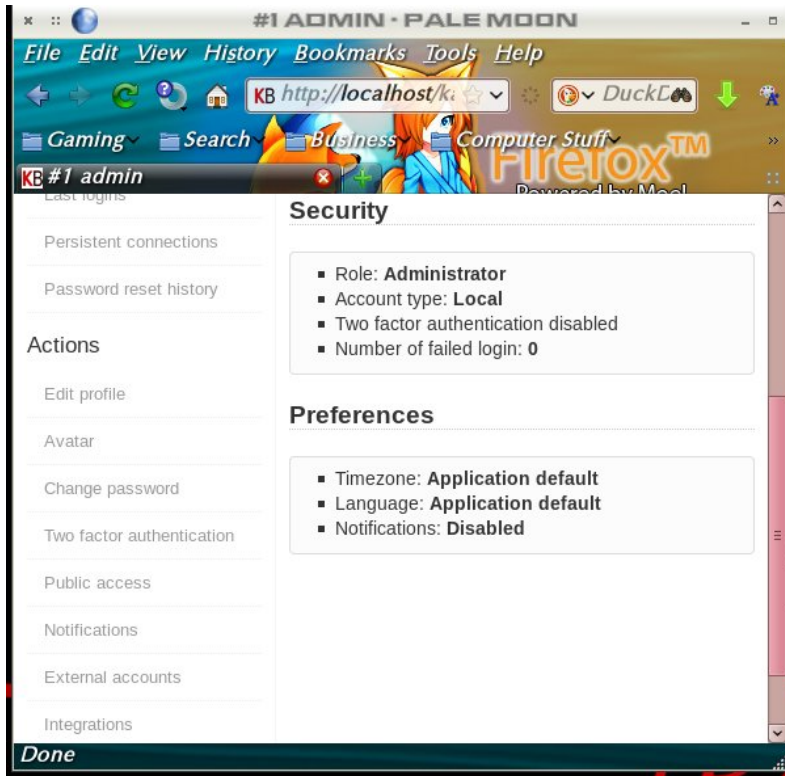
(Figure 16: Kanban Admin's Dashboard with Settings Menu open)



Revisiting Using Kanban On PCLinuxOS: Installing Kanboard

Click on **My profile** to open admin's profile. When the dashboard loads, look under Actions in the sidebar at left:

(Figure 17: Admin's Profile showing Actions Menu at left)

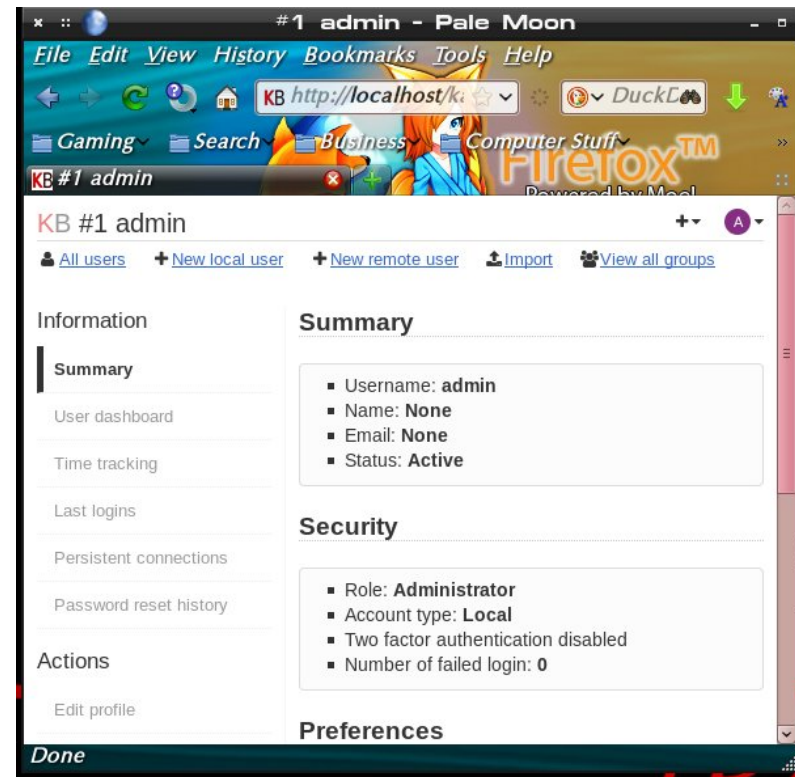


Click Change password and get to it. Please write your new password down in a notepad or otherwise ensure you can remember it. If you lose or forget it, you will be unable to login as admin.

While you're in the dashboard, look up at the top left. A set of links there allow for group and user management. Click New local user to add a new user (like your normal local user) to Kanboard as a user.

PCLOS-Talk
Instant Messaging Server
Sign up TODAY! <http://pcclostalk.pcclosusers.com>

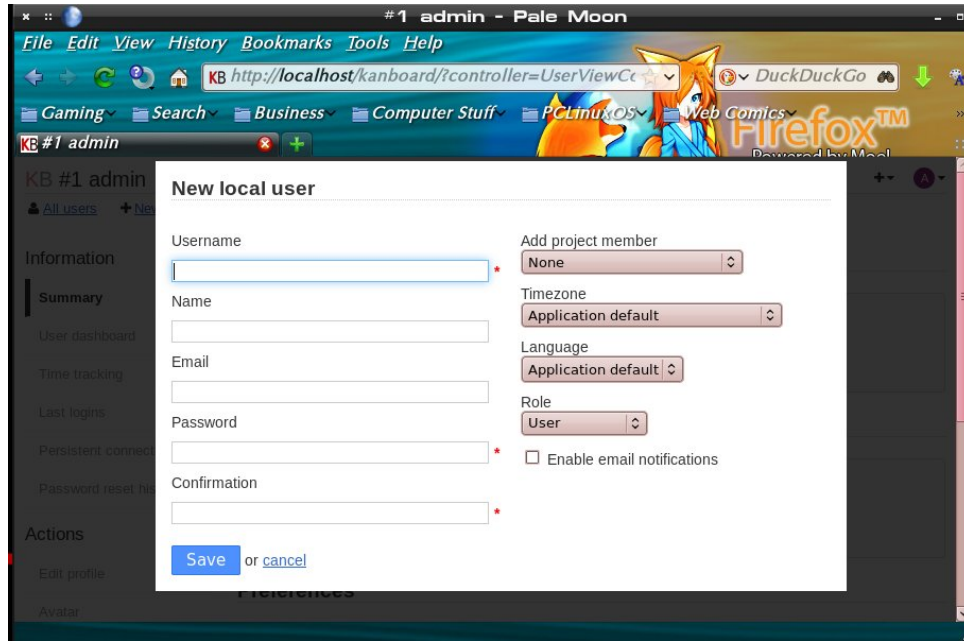
(Figure 18: Admin's Dashboard showing User/Group Management Links)



The shot below shows the dialog for adding a new local user. To be clear, the term local user means a Linux user local to the machine. All that is really required to be entered here is the username, password, and password confirmation. All the details at right can be added later on if other members need to be added to this user's projects.

edX THE LINUX FOUNDATION
Introduction to Linux
FREE Course

(Figure 19: Adding a New Local User to Kanboard)



If, for example, we wished to add the local user johnboy to kanboard, we would enter johnboy for the Username, and a temporary password (e.g., temp1234) that the user could change on their first time logging in. Click save, and the local user is added. Admin (or johnboy) could edit johnboy's details later via the dashboard.

PART VIII: CONCLUSIONS

That's as far as I will take you for now. Once you create a local user for yourself, knock around and play with Kanboard. If you want to do it the easy way, the documentation is accessible from the dashboard (see Figure 16, above), and more information for Kanboard can be found at:

<https://kanboard.net/features> and elsewhere on the Kanboard website.

Such features as plugins, remote users and collaborative features others may find useful are beyond my present use case, so I leave them for you all to explore as you may need. Kanboard is really simple to use for something so packed with features, and should serve well for any Kanban needs most folks will have.

A collage of several covers of PCLinuxOS Magazine Special Editions. The covers are tilted and overlapping. Visible titles include: 'The PCLinuxOS magazine Enlightenment Special Edition May, 2011', 'The PCLinuxOS magazine Windows Migration Guide September 2013', 'The NEW PCLinuxOS Magazine Fall 2010', 'The KDE 4 SC Special Edition', 'The NEW PCLinuxOS Magazine Gtk, Lightweight Desktops: Xfce & LXDE Special Edition November, 2010', 'The PCLinuxOS magazine Command Line Interface Intro Special Edition October, 2010', and 'The PCLinuxOS magazine Openbox Special Edition March, 2012'. The covers feature various Linux-related graphics, including penguins, desktop icons, and terminal windows.

Get Your Free Copies Today!



Running Silent Hill 2 DC In PCLinuxOS

by Alessandro Ebersol (Agent Smith)



After barely surviving the first game, you return to Silent Hill ...

Silent Hill 2 is the second episode of the survival horror game franchise Silent Hill. The game was released in late 2001 for the PlayStation 2 and was ported to the Microsoft Xbox later that year, and then the PC the following year (2002).

While the game takes place in the homonymous city of the series, it is not a direct sequel to the events and characters from the first game, and occurs at an unspecified date between this and the third game. This episode focuses on a new character, James Sunderland, who enters the city after receiving a letter written by his late wife Mary, saying she is waiting for him in their "special place" in Silent Hill.



The PC version

The PC version of Silent Hill 2 was released in December 2002, made by Creature Labs and published by Konami. The PC version is equivalent to the Xbox version and the PS2 version "Greatest Hits," including the Mary scenario and the extra ending. In Europe, it had the same caption in the label PS2 Platinum. Additional features include the ability to save anywhere, QuickSave and Quickload, and a movie menu to view trailers of Silent Hill 2 and Silent Hill 3, and any movie in the game, once it has been seen by the player.

How to install it in PCLinuxOS?

You will need Winetricks. In Winetricks select the Default Wine prefix.

Select "Install a Windows DLL or Component."

Now, look for DirectX9 (d3dx9_36) and mark it for installation.

Now, you're ready to do the game installation.

The game comes on three (3) CDs. To install it correctly, the CDs have to be copied to the hard drive. I recommend the desktop area, as it will be more viewable, and will be temporary..

1. Create three (3) folders on your desktop: CD1, CD2 and CD3
2. Copy the entire CD1 to the CD1 folder.
3. Copy the entire CD2 to the CD2 folder.
4. Copy the entire CD3 to the CD3 folder.
5. Now, rename the folder CD1 to CD_ROM.
6. Run setup.exe from the game, and start installing normally.
7. It will then ask to put the CD2.
8. Here's the catch: rename the folder CD_ROM back to CD1, and the folder CD2 to CD_ROM.
9. Press OK in the game installer.
10. It will continue installing normally.
11. When asked to change the CD's, the only thing that you will do is rename the folders. That is, when the installer asks for CD3, rename the CD3 folder to CD_ROM and so on.
12. Ok, installation finished.

The program prompts to install DirectX8 during installation. Refuse to install this and move on. It is not necessary, and the game runs very well,

especially since you installed DirectX9 before installing the game.



Playing Silent Hill 2 on modern computers

Silent Hill 2 was created in a time when computers with more than one core did not exist. Therefore, it does not run right on multicore machines. To be able to run SH2 in today's computers, you must use a utility, SH2Proxy.

What does SH2Proxy do?

- Allows windowed mode
- Custom Resolution
- Borderless game window
- Game window positioning
- Performs with different parameters (defined in a cli or in an .ini file)
 - Automatically sets the game to run in only one core. (core affinity)

And, it can be configured in an .ini file, sh2proxy.ini

The utility can be downloaded here, and you must replace the sh2pc.exe program, which is in /home/~/.wine/drive_c/Program Files /Konami/ Silent Hill 2.

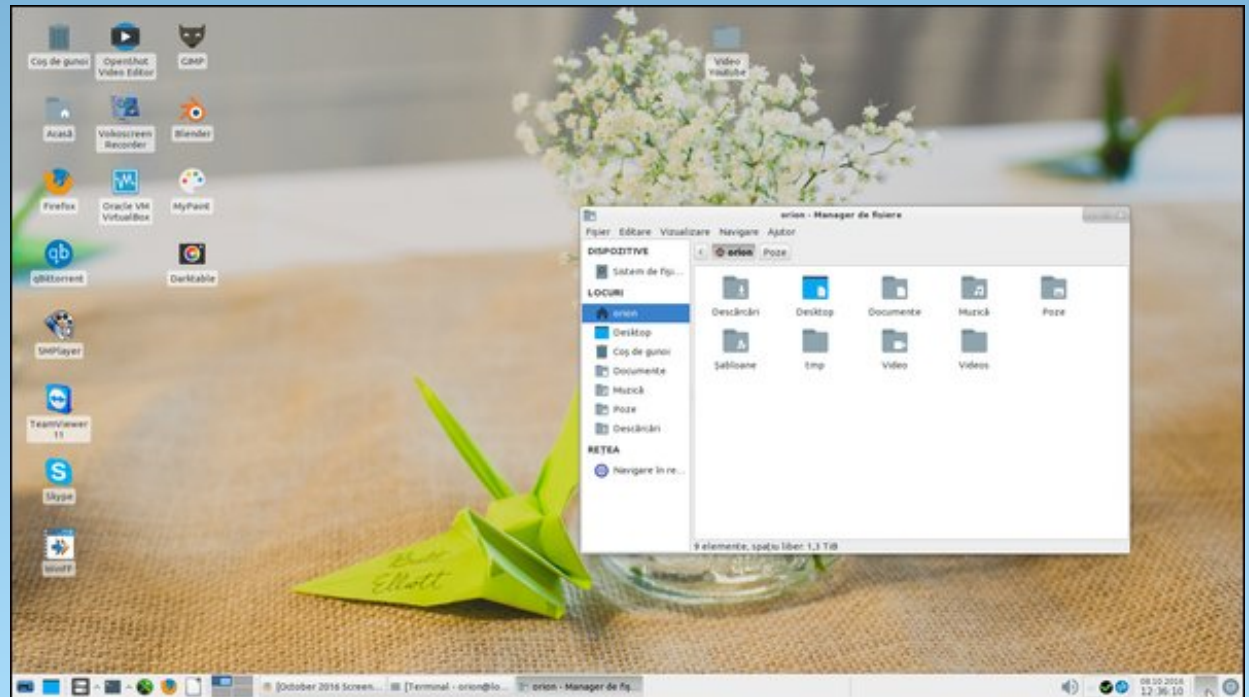
The game runs well even on modest hardware. Minimum video memory to run is 32MB of VRAM.

It has some glitches with Intel video cards, but it is nothing that prevents the game from running.

Have fun in the foggy haunted city.



Screenshot Showcase



Posted by Orion, on October 8, 2016, running Xfce.



Tip Top Tips: Send Email From The Command Line With Sendmail Using A Gmail Account

Editor's Note: *Tip Top Tips* is a monthly column in *The PCLinuxOS Magazine*. Each month, we will feature – and possibly even expand upon – one tip from the PCLinuxOS forum. The magazine will not accept independent tip submissions specifically intended for inclusion in the *Tip Top Tips* column. Rather, if you have a tip, share it in the PCLinuxOS forum's "Tips & Tricks" section. Your tip just may be selected for publication in *The PCLinuxOS Magazine*.

This month's **tip** comes from PCLinuxOS forum member **MBantz**.

I have just completed a project where I needed PCLinuxOS to send emails from a php web form using sendmail. It took me some time to figure out, and perhaps this can be useful. It can also be used to send emails directly from the command line or from scripts.

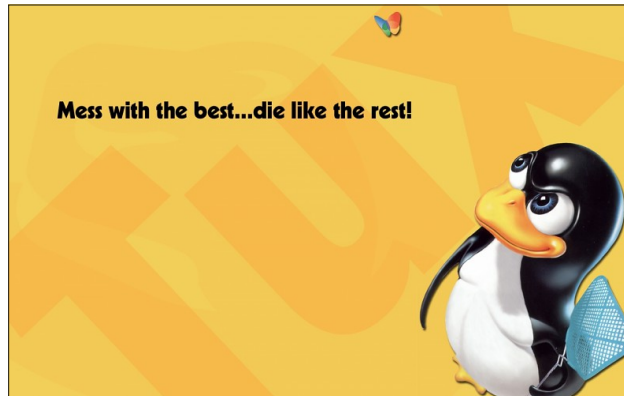
1) Install sendmail and sendmail-cf from Synaptic

2) Create a Gmail account, log on to this account and allow less secure login (in the Gmail account settings)

3) As root - do the following:

```
mkdir -m 700 /etc/mail/authinfo/  
cd /etc/mail/authinfo
```

Create a text password file and name it `/etc/mail/authinfo/gmail-auth` with this content (replace e-mail address and password -after- the colons):



```
AuthInfo: "U:root" "I:gmailusername"  
"P:gmailpassword"
```

Then, create sendmail database map:

```
makemap hash gmail-auth < gmail-auth
```

Put these lines in your `/etc/mail/sendmail.mc` configuration - just above the first MAILER definition line:

```
define(`SMART_HOST', `[smtp.gmail.com]')dn1
```

```
define(`RELAY_MAILER_ARGS', `TCP $h  
587')dn1
```

```
define(`ESMTP_MAILER_ARGS', `TCP $h  
587')dn1
```

```
define(`confAUTH_OPTIONS', `A p')dn1
```

```
TRUST_AUTH_MECH(`EXTERNAL DIGEST-MD5 CRAM-  
MD5 LOGIN PLAIN')dn1
```

```
define(`confAUTH_MECHANISMS', `EXTERNAL  
GSSAPI DIGEST-MD5 CRAM-MD5 LOGIN PLAIN')dn1
```

```
FEATURE(`authinfo', `hash -o
```

```
/etc/mail/authinfo/gmail-auth.db')dn1
```

Then, refresh sendmail config:

```
make -C /etc/mail
```

4) Configure automatic start of sendmail:

Still as root:

Edit the file `/etc/sysconfig/sendmail`

and add this line:
DAEMON="yes"

Then, start sendmail service:

```
service sendmail start
```

Test with:

```
echo "Just testing my sendmail gmail relay"  
| mail -s "Sendmail gmail Relay" my-  
email@my-domain.com
```

Cheers!

Editor's note: Google will limit individual users to 500 emails per 24 hour period using a third party agent, such as sendmail. Users needing to send more than 500 emails per 24 hour period should look into a business account with Google, or a different email provider.



Testimonial: From Distro To Distro To PCLinuxOS ... Or How I Quit Hopping

by kvonlinux

Hello, everyone!

I was a [expletive deleted] user my entire life (as far as personal PC use was concerned).

...until two months ago - when I discovered Linux.

I had heard of Linux, of course. I had simply never felt the need to stray from the beaten path, but, recently, I've had plenty of free time on my hands, so I decided to delve into the Linux universe, and I have been enjoying the heck out of learning as many ins and outs as possible every day since!

In the beginning, I had no idea which distro to try. (I didn't even realize that I wouldn't be stuck with the first one I picked. (I am a lifelong [expletive deleted] user, remember?))

A few online searches led me to the 'top ten distros' (which varied from site to site, except for the number one and runner-up), so I decided to go for the distro which all the sites proclaimed to be this year's 'number one distro'. (Later I learned that the sites were listing the top ten searched-for distros, but I digress.)

At first, I was afraid of even attempting to partition my hard drive, so I installed it on an external USB drive and was pleasantly surprised how simple the (guided, GUI) installation process was (although, at the time, I had no idea that anything even existed which wasn't guided with a GUI). The desktop environment (a term which I was also unfamiliar with) was nearly identical to the one I had been accustomed to for the past thirty years, and I found that I now had access to something called a "BASH

terminal" (which I'd read about online, but couldn't access because I had the Home version of [expletive deleted] as opposed to the Pro version - the latter being the more expensive version with all the features one actually wants and needs in their OS) as well as thousands of free applications - most of which I preferred to their paid counterparts!



I played with my new, green OS for about a week before I decided to search for a different distro -- one which would be more of a challenge to install as well as to use, and, this time, I went for [distro(X)] so I could learn more about the way Linux worked by installing and configuring each part of my system piece by piece. I got it going on my first attempt (with a little help from Pacman and elinks), and I was quite fond of the rolling release model. It took me about a week to get everything I wanted and needed installed and configured, but I was (and still am) quite pleased with the outcome. So...

I decided to try out the rest of the "top ten" distros (seeming how I now had an app called Virtualbox and could now install whatever OS I pleased without having to replace my existing system), and I think I went through around 25 of them (remember: each site listed different distros in their respective top-ten listing) before I finally landed on PCLinuxOS 2016: The Full Monty Edition.

WOW!!!

This distro has EVERYTHING loaded straight out of the box!

It has every single thing I'd installed into my [distro(x)] system, plus many more! (And that's saying something, because I had downloaded every app I came across in the repositories that I thought anyone I ever knew might benefit from!)

It is extremely easy to use.

Everything seems to have a sort of ... flow.

It just comes together perfectly. (I don't even feel the urge to personalize anything yet!)

...and any time I feel up to more of a challenge, I can always pop open a terminal, and the Full Monty Document Portal will guide me down the path to computational enlightenment! I love it!

It is also visually stunning - especially the 6 different work-spaces (hopefully I'm using the proper terminology when I refer to them as 'work-spaces'). I find that aspect particularly awesome, and so do my friends who stop by and notice my new, eye-catching OS. (It's the bull that catches their eye, I think.)

Anyway ...

I am glad I found PCLinuxOS.

It is now on my hard drive, and I am using it productively as well as learning new things from it every day!

Keep up the good work, everybody!



PCLOS-Talk
Instant Messaging Server

Sign up **TODAY!** <http://pclostalk.pclosusers.com>

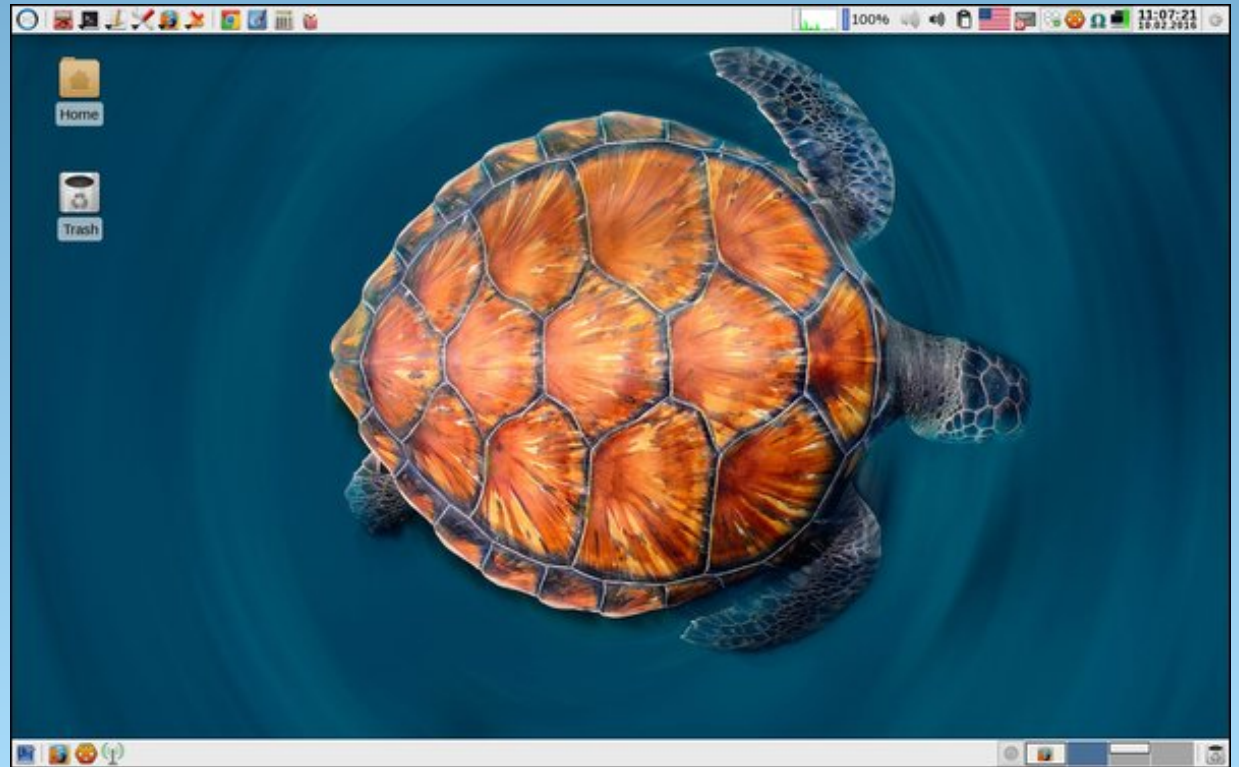
Instant Messages

Screenshot Showcase

Looking for an old article?
Can't find what you want? Try the

PCLinuxOS Magazine's
searchable index!

The **PCLinuxOS** magazine



Posted by parnote, on October 2, 2016, running Xfce.



PCLinuxOS Family Member Spotlight: dougmack

As told to YouCanToo

What is your name/username?

Doug McGarrett/dougmack

How old are you?

78

Are you married, single?

Divorced for 40 years.

How about Kids, Grandkids?

3 grown children, 6 grandkids.

Do you have pets, what is your favorite?

I'm a dog person. My present housemate is a Norwegian Elkhound named Thor.

Are you retired, still working and if working, what do you do?

I'm a retired RF (radio frequency) Engineer. When I was working, I designed radio receivers, transmitters, test equipment, and some antennas for the low microwave region.

Where do you call home? What is it like? IE: weather, scenery

I live in Rocky Point, Long Island, NY. It's still "countryish" even though it is 50 miles from New York City. It's about 14 miles from a major shopping mall. Rocky Point is on the North Shore of

Long Island; I'm about six tenths of a mile from Long Island Sound. Walking distance if you don't mind hills! Rocky Point was originally a summer community, and even had a railroad station up until 1940. It is now all single-family homes, many of them, including mine, converted and expanded from summer cottages.

Where did you go to school and what is your education level?

Several colleges on Long Island. I never got the degree.

What kind of things do you like doing? hobbies, travel, fishing, camping?

I still do a little electronic construction – small circuits for various useful things. I'm an Extra Class radio amateur (WA2SAY) although I'm not terribly active at present. I play piano, Hammond organ, guitar, and Dobro (an acoustic steel guitar). I used to gig out on weekends. I am the editor of a small circulation Newsletter for the Pedal Steel Guitar Association. I get the email lists from Ubuntu, Debian, and Fedora, also sdr radio, and occasionally answer one.

Why and when did you start using Linux?

I got interested in Linux back in the 1990s, while I was still working. There were software engineers whom I could look to for assistance. I was curious about this Unix-like system. (I was first exposed to computing at work in the late 60s, when the hardware was a Teletype machine and an acoustic modem connecting to someplace in Texas. The programming languages were BASIC and Fortran. I learned BASIC then.) Over the ensuing years, I did a little simple programming at work, and after a while, I

built the Big Board computer for home use. I also took a course in Pascal at a local college, and did some engineering programming in that language. I first tried out Linux about 1997 or so, and futzed around with various distros for a couple of years. I ran RedHat for a while, and discovered PCLinuxOS around 2005, I think it was. I have looked at a few other distros since, including Ubuntu and Mint, and a couple of others that seem to have disappeared. I've always come back to PCLinuxOS. I like the KDE interface, Synaptic package manager, and the RPM system, which allows me to get some apps that are not presently available in the repos, like the SoftMaker Office package, DraftSight, and LightScribe. The PCLinuxOS Forum is extremely helpful! In the Fall of 2010, I took a one-semester course in Linux at the local Community College. I scored a B+! I have Windows on some of my computers, but I very seldom use it – mainly for music apps, which I consider fairly useless in Linux. As a matter of fact, I frequently have to email my son with questions on how to use Windows, since I have forgotten quite a bit, and also because Microsoft keeps changing the terminology from release to release.

PCLinuxOS Family Member Spotlight is an exclusive, monthly column by YouCanToo, featuring PCLinuxOS forum member. This column will allow "the rest of us" to get to know our forum family members better, and will give those featured an opportunity to share their PCLinuxOS story with the rest of the world.

If you would like to be featured in PCLinuxOS Family Member Spotlight, please send a private message to youcantoo, parnote or Meemaw in the PCLinuxOS forum expressing your interest.

ms_meme's Nook: I Survived

At first I was afraid I was pertified
Couldn't make Windows work
Though I tried and tried

So many nights how I cried and cried
Linux turned the tide
And I survived

That Windows was such a chore
I won't be booting it anymore
Now I know I have the very best
PCLinuxOS

I'm no longer sad or in a slump
So happy Windows I did dump
On my 'puter now there is no trace
PCLOS takes all the space

Using Linux I am dry-eyed
With it I feel electrified
Never will I ever leave its side
I did survive I did survive I did survive



MP3

OGG

Game Zone: ZeGame

by daiashi



About The Game

ZeGame is a game about using your head to solve puzzles. There are two game modes, with 160 levels spanning eight worlds. Each world has its own backdrop and sound theme.

There is also a map editor available for free as well. You basically move your mouse around to get the best view or angle and then use your arrow keys (or w,a,s,d) to move the block along its path to the end or final object. ZeGame starts out simple and later tests your Patience. If you're a calm person, the soft music and mechanics of the game will put you to sleep. Final words: Very well made and a great time passer.

- Eight worlds and 160 levels
- Stunning backgrounds for each world
- A level editor
- Browse levels made by the community
- Achievements and cards
- Steam Cloud support
- Leaderboards

- Two game modes
- Controller support

System requirements:

Fully updated PCLinuxOS and Steam

Hardware:

OS: PCLinuxOS

Processor: SSE2 instruction set support

Memory: 300 MB RAM

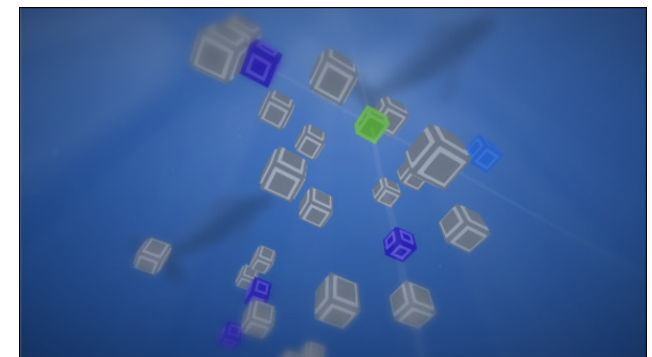
Graphics: Intel 4000

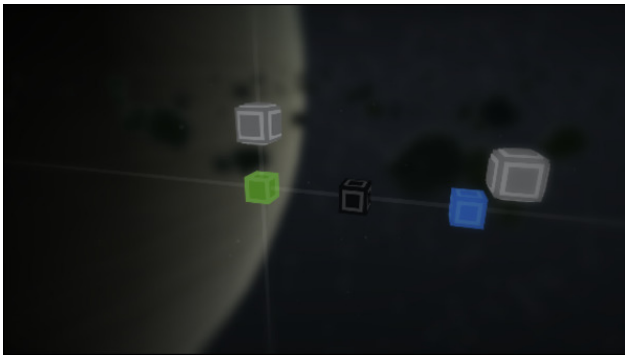
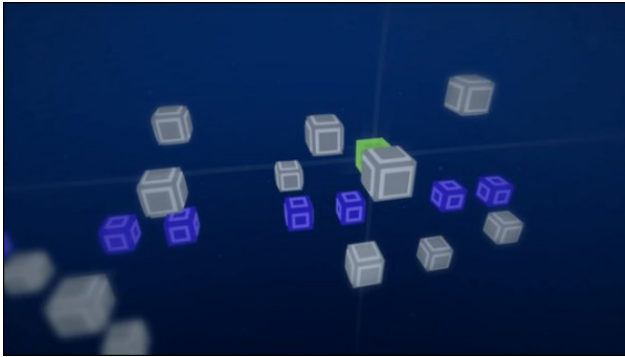
Storage: 100 MB available space

About The Company

A game by: Jespertheend
Sound design: Selle Sellink
Scored by: New Hansen
Based in the Netherlands

Some Gameplay Screenshots






Getting It To Run

Install Steam (if you don't have it installed already), then start it. You will need to create a new account, if you do not already have one. Once you have Steam up and running, go to the store tab. Click on the Linux tab if you wish and search for ZeGame. Click on and download the demo. If you have updated your system, including graphics drivers, you should be good to go.

[ZeGame](#)



commandlinefu.com

 **The PCLinuxOS Magazine**
Created with Scribus



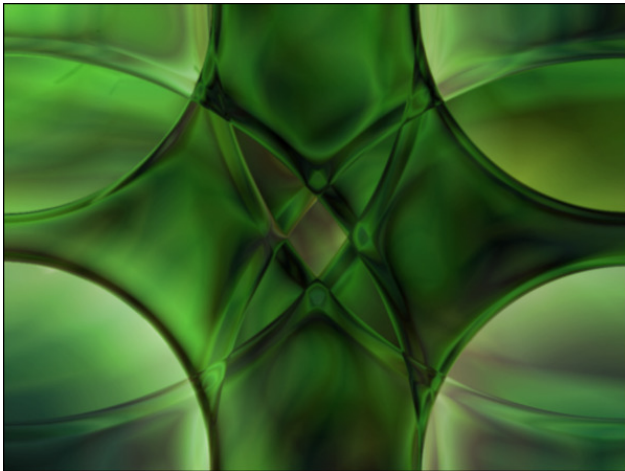
Screenshot Showcase



Posted by tuxlink, on October 4, 2016, running KDE.

GIMP Tutorial: Create Abstract Glass Art

by Meemaw



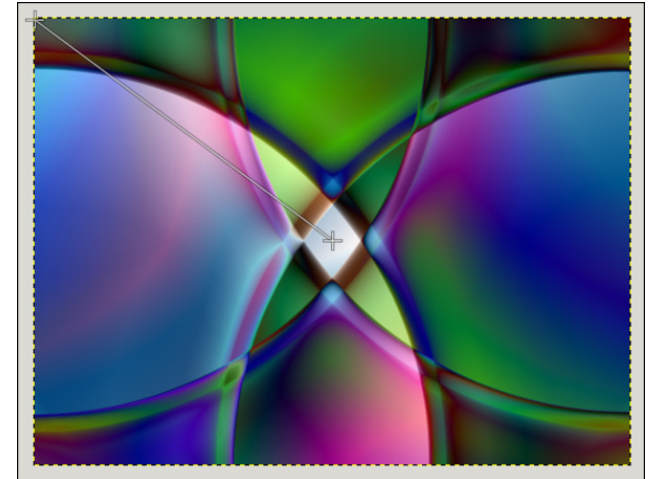
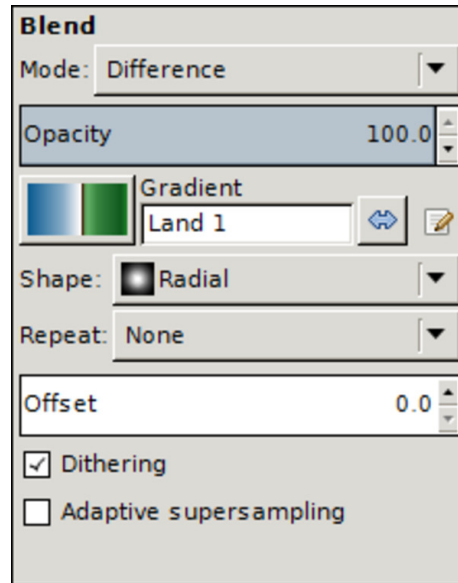
I found this one on <http://mygimptutorial.com/> and it looks really neat. It creates shapes that appear to be cut glass with light reflecting on and through them.

This one takes a little practice as colors tend to blend more than you want them to. You can use different gradients and get different effects, but let's do the basic steps that resulted in the image above.

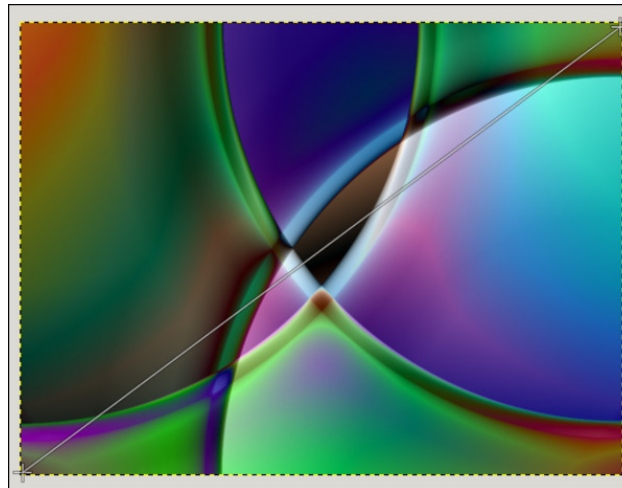
Create a new image, size 1024x768, making sure the background is white.

Select the **Blend** tool and set **Mode** to **Difference** and the **Shape** to **Radial**. The original tutorial used **Land1** as the gradient, so we will do that (center, top).

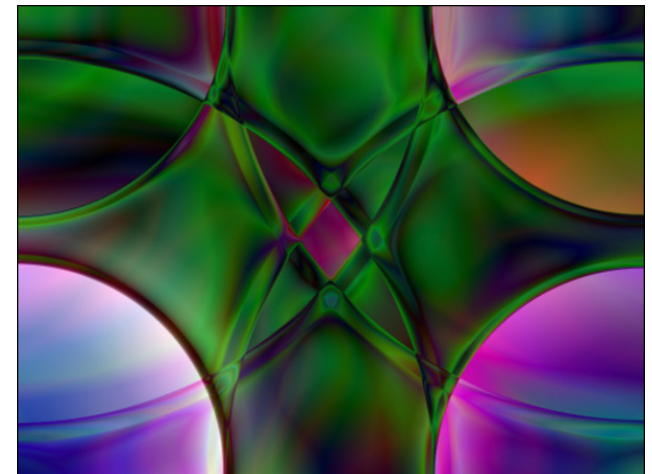
You will want to create **eight** gradients: one from each corner to the opposite corner. You can see I have already done 3 of those (center, top):



When you're finished, the image should look similar to this:

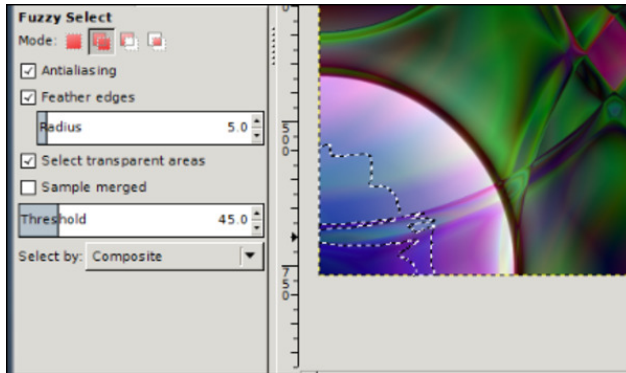


You also want one from each corner to the center. This one is my first (right, top):

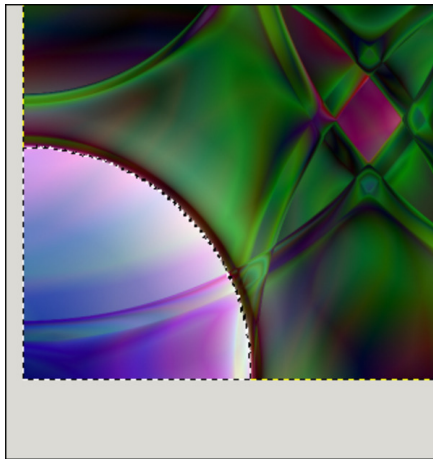


You might also notice that the color in your last corner is much brighter, so let's adjust the brightness there. In this one, my bottom left corner is too bright.

Click on the **Fuzzy Select** tool, set the threshold to 45, and also enable **Feather edges** and set them to 5. Holding down the **Shift** key, click once in the corner:

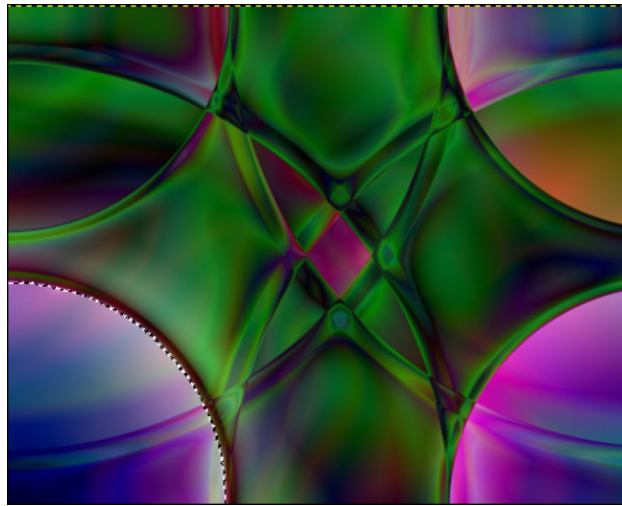


Keep holding Shift and click on all the light areas in that corner until your selection looks similar to this:



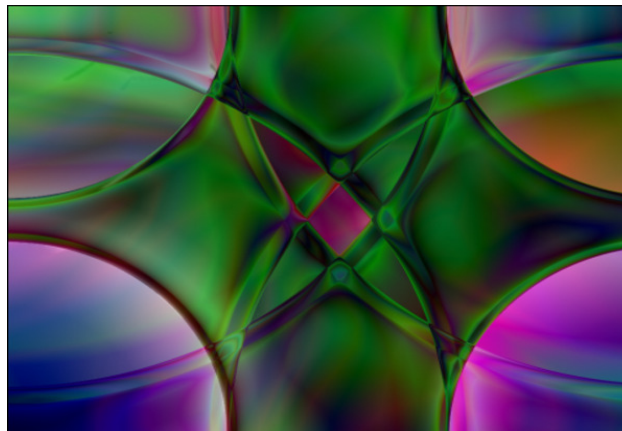
Click on **Colors > Brightness-Contrast**. Set the Brightness to at least -60 and Contrast to at least 20. You might have to experiment to get your corners closer to even. I ended up setting mine to Brightness -75 and Contrast 30 (center, top).

When it looks closer to the other corners, then click on **Select > None** to go back to the entire drawing.



Just in case you also have a corner that is too dark, you can use the **Fuzzy Select** tool again. Set the threshold to 30 this time. Just like before, hold the **Shift** key and click until you have a selection like you had before. It might be a little more difficult. If it wants to select more than you need (like parts of the center), set your threshold down a little bit and try again.

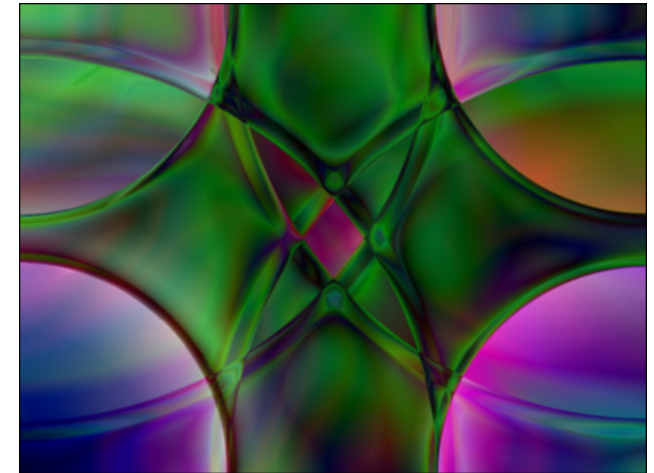
This time set **Brightness** to at least 70 and **Contrast** to 45. My upper left corner was very dark, so I experimented a bit and ended up setting the Brightness to 80 and the Contrast to 30, and mine turned out like this:



Again, click on **Select > None**. This might be a good time to save your work, if you haven't already.

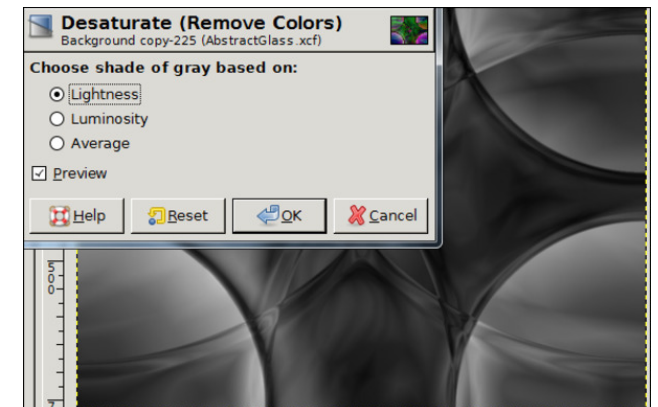
To make this look a bit more "glassy", let's add some blur to soften some of the edges. Click on **Filters > Blur > Gaussian Blur** and set the blur radius to 2.

Now it should look similar to this:

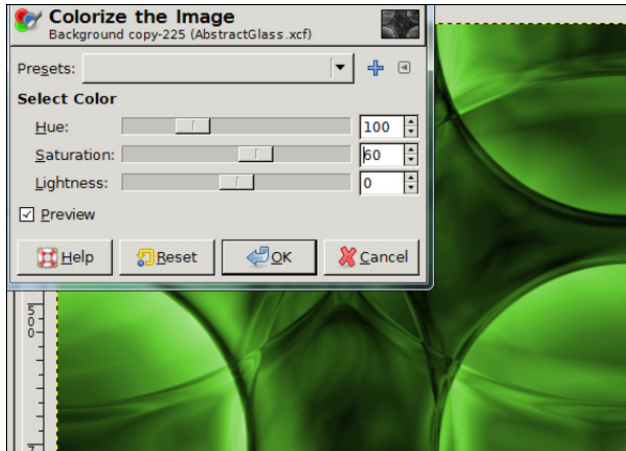


Now duplicate the layer. (In your layers dialog, click on the **Duplicate Layer** button.)

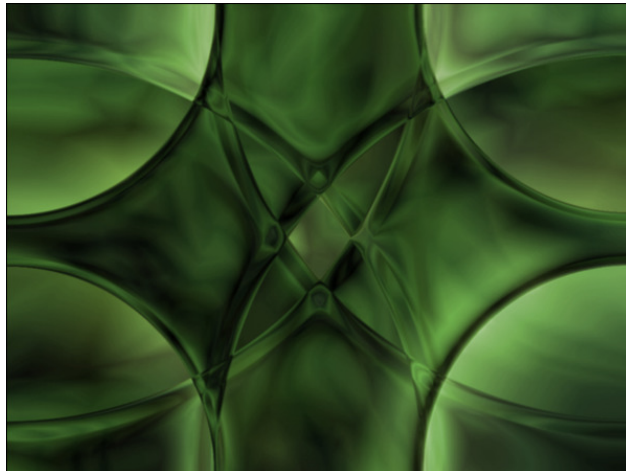
Making sure you have the top layer selected, go to **Colors > Desaturate**.



The layer will be gray, so now select **Colors > Colorize**. Set the **Hue** to 100, and the **Saturation** to 60. This will give your image a nice green color, kind of like old glass.

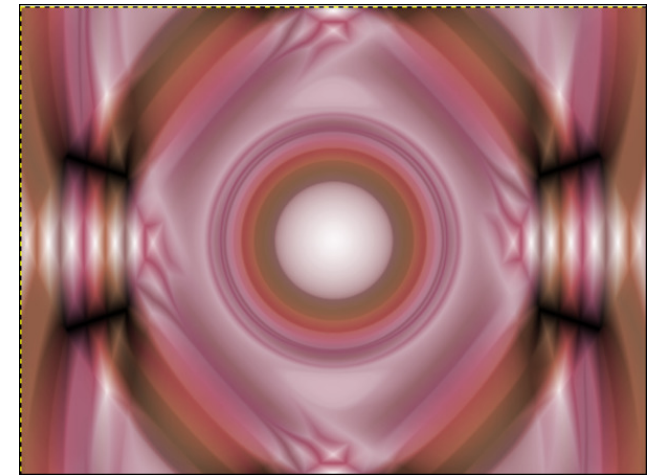


One last thing you can do is to lower the opacity of the green layer to around 75 (in the Layers dialog), so your background layer will shine through and make it look like it's reflecting colors through it.



This is one you can experiment with, substituting other gradients (some don't work as well as others!), other colors in the colorize step and other gradient

shapes. I tried one with the Radial Rainbow gradient and did the first four gradient paths (clear across the rectangle), then reversed the gradient and did one path from the center of the rectangle to below the image. Surprisingly, I didn't have to lighten or darken anything. Then I duplicated and desaturated the layer, but then when I colorized, my hue was set to 360 and Saturation down to 40 or 50. I then set the opacity of the layer to 90. Here is my result. Weird, huh? Definitely not as "glassy".



Screenshot Showcase



Posted by Meemaw, on October 17, 2016, running Xfce.

PCLinuxOS Bonus Recipe



*from the kitchen of
youcantoo*

Cake Mix Cinnamon Rolls

Ingredients

1 box Betty Crocker™ SuperMoist™ yellow cake mix
2 1/2 to 3 cups all-purpose flour
1 package (2 1/4 teaspoons) regular active dry yeast
1 1/4 cups water
1/4 cup butter, melted and cooled
1/2 cup packed brown sugar
1 teaspoon ground cinnamon
1 container Betty Crocker™ Rich & Creamy cream cheese frosting

Directions

1. Grease 13x9-inch pan or 2 (9-inch) round cake pans with shortening or cooking spray.
2. In a large bowl, mix cake mix, 1 cup of the flour and the yeast. Add water; stir with wooden spoon until dough forms. Add the remaining flour 1/4 cup at a time, stirring after each addition, until a soft dough forms. You may not need all of the flour. Cover with plastic wrap, and let rise in warm place until doubled, about 1 hour.
3. Gently punch down dough, and then reshape it into a ball. Let rest for a few minutes. Meanwhile,

have melted butter ready, and in a small bowl, mix brown sugar and cinnamon.

4. On lightly floured surface, roll dough into large rectangle about 1/4 inch thick. Brush with melted butter; sprinkle with cinnamon sugar. Starting with 1 long end, tightly roll up dough into a log. Cut into 12 rolls.

5. Place rolls in pan(s); cover with plastic wrap. Let rise about 30 minutes while you heat oven to 375°F.

6. Bake 8 to 10 minutes or until golden brown. Cool 5 minutes; spread with frosting. Serve warm or at room temperature.

Options: Add colorful sprinkles to liven things up or for a child's birthday.



*The
PCLinuxOS
Magazine*
**Created with
Scribus**

Does your computer run slow?

Are you tired of all the "Blue Screens of Death" computer crashes?



Are viruses, adware, malware & spyware slowing you down?

Get your PC back to good health TODAY!

Get



Download your copy today! FREE!



LibreOffice: Calc Shortcuts

by Meemaw

I get emails from many sources in my job. I recently got one from one of the office supply companies I purchase from, telling me all the wonderful shortcuts that MS Excel has to simplify your work. After reading it, I decided to check LibreOffice Calc and see which ones work there, since I use Calc instead of Excel at work.

Shortcuts to Navigate More Smoothly

What follows are a few keyboard shortcuts you can use to move around your spreadsheet a little faster.

Move to the last cell in a worksheet

Sometimes you need to jump to the last records of data quickly. To do this, use **<CTRL> + End** (if your End key is on your keypad, as it is on my laptop, be sure to turn off your number lock.)

Move from sheet to sheet

Move to the next worksheet by pressing **<CTRL> + Page down**. Move to the previous sheet with **<CTRL> + Page Up** (again, if those keys are on your keypad, be sure to turn off your number lock).

Move to the edge of a range of data

If you have a large range of data, you can quickly move to the right, left, top, or bottom by pressing the **<CTRL> + arrow key of the direction you want to go**. I tried this with my Christmas card addresses, and I should warn you about any empty cells that you may have. I have some addresses that I took out because the people had moved and I didn't have new addresses yet. When I clicked **<CTRL> + down arrow** in the address column, the cursor went down to the last **filled** cell in that column, but when I chose the name column, which is all complete, the **<CTRL> + down arrow** succeeded in going clear to the bottom.

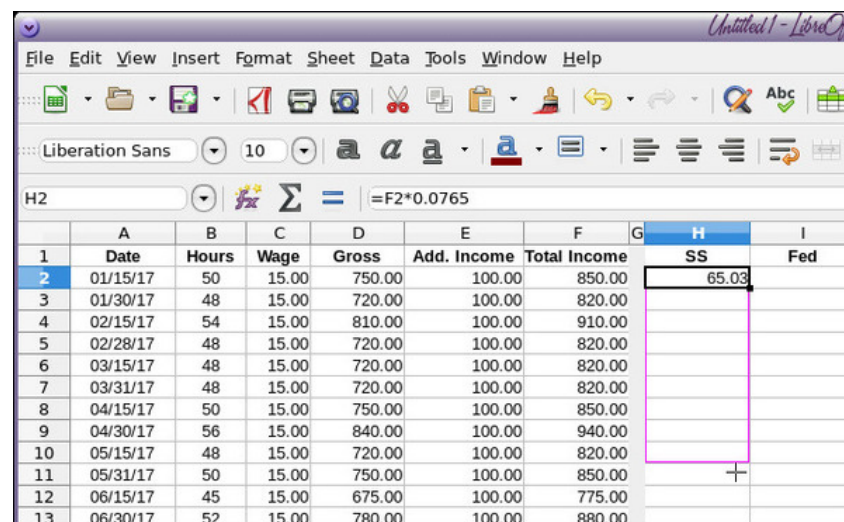
Cutting Data Entry Time

Data entry is time consuming no matter what spreadsheet or program you use, so let's look at some shortcuts that work in LibreOffice.

Quickly Copy a Formula

At work, I have a spreadsheet created for my payroll records. In a spreadsheet, anything you need to calculate must have a formula, or you do it yourself and enter the answer. So here, it is **Hours Worked times Hourly Wage** for one calculation, **Calculate Social Security Withheld** for another, **Sum the Deductions** and **Subtract Deductions from the Gross Pay** for two more! The pay period is twice a month, so for a year there are twenty-four pay periods, and four times twenty-four formula entries. Whew! Let's see if we can do it faster. Put your formula into the first row. In my example, I have entered the formula for calculating Social Security deductions (total wages multiplied by .0765).

Instead of copying and pasting this all the way down, you can click the cell with the formula, which in this sheet is cell H2. Now hold your mouse over the bottom right corner until the cursor turns into a plus sign. Click and drag your mouse pointer down the rows you want the formula in. This will repeat and adjust the formula for each cell in the column. If you have data entered, it will calculate it as well.



	A	B	C	D	E	F	G	H	I
1	Date	Hours	Wage	Gross	Add. Income	Total Income		SS	Fed
2	01/15/17	50	15.00	750.00	100.00	850.00		65.03	
3	01/30/17	48	15.00	720.00	100.00	820.00			
4	02/15/17	54	15.00	810.00	100.00	910.00			
5	02/28/17	48	15.00	720.00	100.00	820.00			
6	03/15/17	48	15.00	720.00	100.00	820.00			
7	03/31/17	48	15.00	720.00	100.00	820.00			
8	04/15/17	50	15.00	750.00	100.00	850.00			
9	04/30/17	56	15.00	840.00	100.00	940.00			
10	05/15/17	48	15.00	720.00	100.00	820.00			
11	05/31/17	50	15.00	750.00	100.00	850.00			
12	06/15/17	45	15.00	675.00	100.00	775.00			
13	06/30/17	52	15.00	780.00	100.00	880.00			

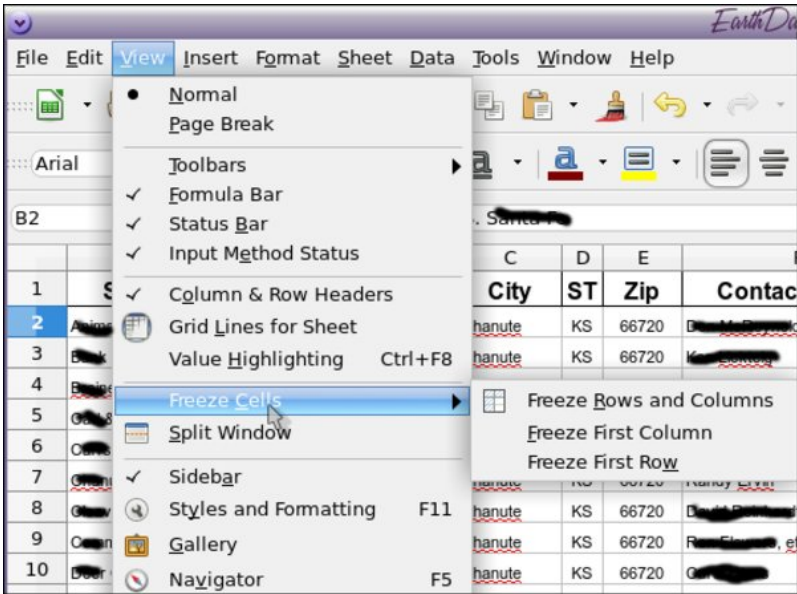
Freeze Cells

When you have many columns and rows of data, it can be difficult to remember what each column is once you scroll down. If you have several data columns that have similar data (like records of month-to-month sales for many people, or sales of individual items), you run the risk of entering the data incorrectly.

Rather than lose visibility of column headings or row names while scrolling, you can Freeze the Cells. To do this, place the cursor below the column heading and to the right of the names. That would be cell B2.

Go to View and then Freeze Cells and then you have three choices: Freeze Rows and Columns, Freeze First Row or Freeze First Column. Do whichever works best for the data you have.

This will make the row and/or column headings stationary so you can see them while you enter your data.



How to Make Projections

If you have a data group, you might want to try to predict future values. For example, I might have a spreadsheet of employee sales over a 12-month period. It would be helpful to find a trend to see what the future might be.

This can be done with a function called FORECAST. Using a spreadsheet of employee sales, I might be able to see the trend of sales over the next few months.

Table with columns A-N and rows for employees: Amanda, Andrew, David, Henry, James, Linda, Sharon, Vickie, Warren. Columns 1-13 represent months.

I have nine employees and period-by-period sales for 12 months. Let's say I need to try to determine how much inventory I might need for future months by looking at past months' sales. One way to do this is to use the FORECAST function, which will look at the trend of the sales and extrapolate into future numbers. We'll use Amanda's sales, so go to cell N2 and enter in the following formula:

```
=FORECAST(N$1,$B2:$M2,$B$1:$M$1)
```

To break down this formula, you need three key components.

The first part is the current period we are in, which is cell N1. This is period 13. For this formula to work, you need to have the period numbers like they are in row 1. By putting a dollar sign in front of the 1, Calc will always refer to row 1.

The second part is the range of cells that Calc needs to find the trend for. In this case, the range is cells B2 to M2. You need to put a dollar sign in front of the B to anchor it, so when you copy it across, the first column is always B.

The third part of the formula is the range of the periods to look at: cells B1 to M1. Both the second and third parts need to span the same columns. For this, we need to put a dollar sign in front of the B to make it stay there and in front of both 1s (so it's always looking at row 1).



Once you do this, you can do a quick copy to copy it down the rows and over to the right for period 14 and 15, just like we copied the formula earlier. This will produce a projection of future sales over the next 3 periods.

1	A	B	C	D	E	F	G	H	I	J	K	L	M	N	O	P
2	2016 Sales	1	2	3	4	5	6	7	8	9	10	11	12	13	14	15
3	Amelia	600	500	300	600	1000	600	600	300	400	300	400	500	392.42424	374.5920746	356.7599068
4	Andrew	500	800	200	700	400	800	300	1000	400	600	600	300	518.18182	513.2867133	508.3916084
5	David	800	900	1000	600	800	200	500	600	900	500	700	600	531.81818	509.7902098	487.7622378
6	Henry	400	600	400	600	500	800	400	400	600	1000	300	700	651.51515	665.8508159	680.1964802
7	James	800	800	300	300	1000	600	400	300	800	400	600	400	483.33333	464.1025641	444.8717949
8	Linda	1000	600	600	700	800	400	400	800	500	500	600	800	457.33033	539.3939394	525.7575756
9	Sharon	900	400	600	600	600	700	800	700	600	400	400	500	477.27273	458.3916084	439.5104895
10	Vickie	300	300	800	600	400	1000	400	300	1000	1000	600	600	801.51515	831.2354312	860.9557111
11	Warren	700	1000	600	400	500	600	700	400	700	400	400	800	537.87879	527.0396217	516.2004663

Pivot Tables

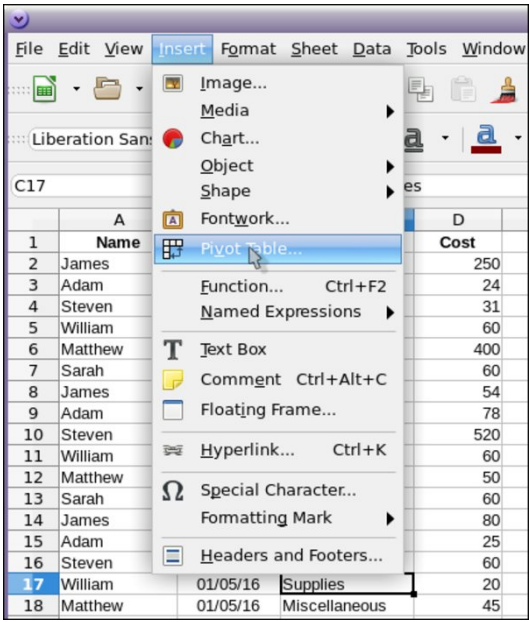
If you have loads of data and it's hard to sift through it all, you might use a Pivot Table. A Pivot Table summarizes a large table of data into a smaller one to see the totals. Let's first look at our table:

1	A	B	C	D
2	Name	Date	Type	Cost
3	James	01/03/16	Machinery	250
4	Adam	01/03/16	Supplies	24
5	Steven	01/03/16	Miscellaneous	31
6	William	01/03/16	Labor	60
7	Matthew	01/03/16	Machinery	400
8	Sarah	01/03/16	Labor	60
9	James	01/04/16	Supplies	54
10	Adam	01/04/16	Miscellaneous	78
11	Steven	01/04/16	Machinery	520
12	William	01/04/16	Supplies	60
13	Matthew	01/04/16	Supplies	50
14	Sarah	01/04/16	Labor	60
15	James	01/05/16	Machinery	80
16	Adam	01/05/16	Miscellaneous	25
17	Steven	01/05/16	Labor	60
18	William	01/05/16	Supplies	20
19	Matthew	01/05/16	Miscellaneous	45
20	Sarah	01/05/16	Supplies	66
21	James	01/06/16	Supplies	44
22	Adam	01/06/16	Supplies	27
23	Steven	01/06/16	Labor	60
24	William	01/06/16	Machinery	520
25	Matthew	01/06/16	Miscellaneous	66
26	Sarah	01/06/16	Labor	50
27	James	01/07/16	Machinery	41
28	Adam	01/07/16	Machinery	82
29	Steven	01/07/16	Miscellaneous	157
30	William	01/07/16	Supplies	40

This is a table of purchases by employees and their categories and costs. A Pivot Table allows you to summarize it. To create a Pivot Table, place the cursor anywhere on the table where you'd like to summarize. Then click Insert and then Pivot Table (right, top).

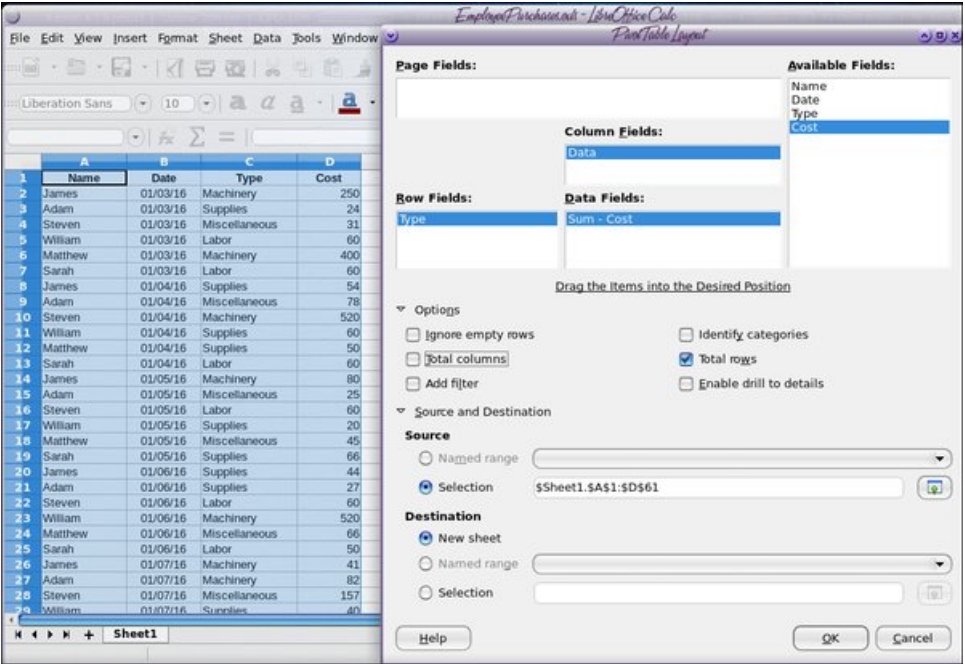
You will get a small window asking if you want the range chosen by Calc (which is probably all of your data), or if you want to specify a different range, or even select a different source (other than the spreadsheet you have open). I chose Current Selection (right, top).

The Pivot Table window will appear. Up at the top, you are given your fields and you should drag them to the appropriate box to display your summary. What I want to do is see the totals spent for the four categories Machinery, Supplies,



Labor and Miscellaneous. To do that, I will drag the field named "Type" to the Row Fields box so the types will be in my table, one to a row. Then I will drag the field named "Cost" to my Data Fields box. It should show up with the word Sum as well.

You need to expand the **Options** and **Source** and **Destination** sections at the bottom. You have several options, but I just want the sum of each type, so I will choose "Total Rows". Also, the range of the table should be filled in.



If not, fill it in manually. Then you can choose to display your data on a New Sheet or in a Selection on the same sheet. If you choose Selection, you can shrink the window and highlight the selection where you want the data to appear. I chose New Sheet.

	A	B	C
1	Type	Sum - Cost	
2	Labor	415	
3	Machinery	2003	
4	Miscellaneous	462	
5	Supplies	385	
6	Total Result	3265	
7			
8			
9			
10			
11			
12			
13			
14			
15			
16			
17			
18			
19			
20			
21			
22			
23			
24			
25			
26			
27			
28			
29			

When you get your configuration filled in (depending on what you want), and click OK, you will be taken to your new sheet:

Now, if I want a summary of how much each person spent, I would drag the field "Name" to the Row Fields box and "Cost" to the Data Fields box. The result is a list of how much each person spent on another sheet. If you like, you can always copy everything over to the first sheet (or in your configuration window, you can choose range destination and select the cells on sheet one).

	A	B
1	Name	Sum - Cost
2	Adam	301
3	James	514
4	Matthew	621
5	Sarah	261
6	Steven	868
7	William	700
8	Total Result	3265
9		
10		
11		

You can even see how much was purchased on a certain date by dragging Date to the Row Fields box. Depending on the fields that you have in your spreadsheet, you can summarize in many different ways.

LO Calc is a great tool! The wonderful programmers for this office suite have labored long and hard to make sure it will do everything that the higher priced office suite will do, and they are doing an excellent job. One of the things they have done is to make sure that LO Calc is "keyboard compatible" with Excel, which is smart when you consider the market penetration of Excel and the rest of the Microsoft Office suite. This way, when users switch from using Excel to LO Calc, all the keyboard shortcuts that the user was accustomed to using in Excel also do the very same thing in LO Calc. It certainly does everything I need it to do.

The PCLinuxOS Magazine Special Editions!



Get Your Free Copies Today!



Disclaimer

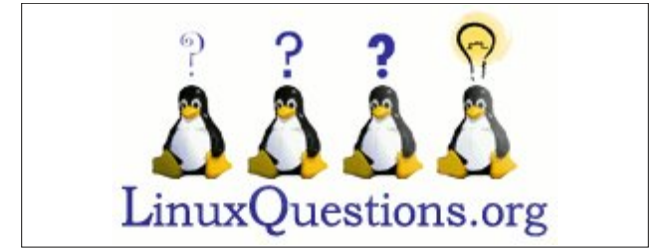
1. All the contents of The PCLinuxOS Magazine are only for general information and/or use. Such contents do not constitute advice and should not be relied upon in making (or refraining from making) any decision. Any specific advice or replies to queries in any part of the magazine is/are the person opinion of such experts/consultants/persons and are not subscribed to by The PCLinuxOS Magazine.
2. The information in The PCLinuxOS Magazine is provided on an "AS IS" basis, and all warranties, expressed or implied of any kind, regarding any matter pertaining to any information, advice or replies are disclaimed and excluded.
3. The PCLinuxOS Magazine and its associates shall not be liable, at any time, for damages (including, but not limited to, without limitation, damages of any kind) arising in contract, tort or otherwise, from the use of or inability to use the magazine, or any of its contents, or from any action taken (or refrained from being taken) as a result of using the magazine or any such contents or for any failure of performance, error, omission, interruption, deletion, defect, delay in operation or transmission, computer virus, communications line failure, theft or destruction or unauthorized access to, alteration of, or use of information contained on the magazine.
4. No representations, warranties or guarantees whatsoever are made as to the accuracy, adequacy, reliability, completeness, suitability, or applicability of the information to a particular situation. All trademarks are the property of their respective owners.
5. Certain links on the magazine lead to resources located on servers maintained by third parties over whom The PCLinuxOS Magazine has no control or connection, business or otherwise. These sites are external to The PCLinuxOS Magazine and by visiting these, you are doing so of your own accord and assume all responsibility and liability for such action.

Material Submitted by Users

A majority of sections in the magazine contain materials submitted by users. The PCLinuxOS Magazine accepts no responsibility for the content, accuracy, conformity to applicable laws of such material.

Entire Agreement

These terms constitute the entire agreement between the parties with respect to the subject matter hereof and supersedes and replaces all prior or contemporaneous understandings or agreements, written or oral, regarding such subject matter.



Screenshot Showcase



Posted by weirdwolf, on October 18, 2016, running LXDE.

PCLinuxOS Puzzled Partitions

8	6			4			
			6	9	5		
			1				9
5	7					8	3
				3			
4	8						2
		4	2				
	3					9	
1		7	9		8	6	

SUDOKU RULES: There is only one valid solution to each Sudoku puzzle. The only way the puzzle can be considered solved correctly is when all 81 boxes contain numbers and the other Sudoku rules have been followed.

When you start a game of Sudoku, some blocks will be prefilled for you. You cannot change these numbers in the course of the game.

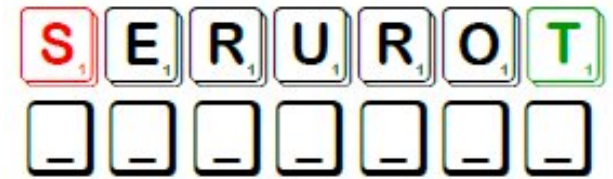
Each column must contain all of the numbers 1 through 9 and no two numbers in the same column of a Sudoku puzzle can be the same. Each row must contain all of the numbers 1 through 9 and no two numbers in the same row of a Sudoku puzzle can be the same.

Each block must contain all of the numbers 1 through 9 and no two numbers in the same block of a Sudoku puzzle can be the same.



SCRAPPLER RULES:

1. Follow the rules of Scrabble®. You can view them [here](#). You have seven (7) letter tiles with which to make as long of a word as you possibly can. Words are based on the English language. Non-English language words are NOT allowed.
2. Red letters are scored double points. Green letters are scored triple points.
3. Add up the score of all the letters that you used. Unused letters are not scored. For red or green letters, apply the multiplier when tallying up your score. Next, apply any additional scoring multipliers, such as double or triple word score.
4. An additional 50 points is added for using all seven (7) of your tiles in a set to make your word. You will not necessarily be able to use all seven (7) of the letters in your set to form a "legal" word.
5. In case you are having difficulty seeing the point value on the letter tiles, here is a list of how they are scored:
 - 0 points: 2 blank tiles
 - 1 point: E, A, I, O, N, R, T, L, S, U
 - 2 points: D, G
 - 3 points: B, C, M, P
 - 4 points: F, H, V, W, Y
 - 5 points: K
 - 8 points: J, X
 - 10 points: Q, Z
6. Optionally, a time limit of 60 minutes should apply to the game, averaging to 12 minutes per letter tile set.
7. Have fun! It's only a game!



Triple Word



Double Word



Possible score 201, average score 141.

Download Puzzle Solutions Here



PCLinuxOS Word Find: November 2016

GIMP Terms

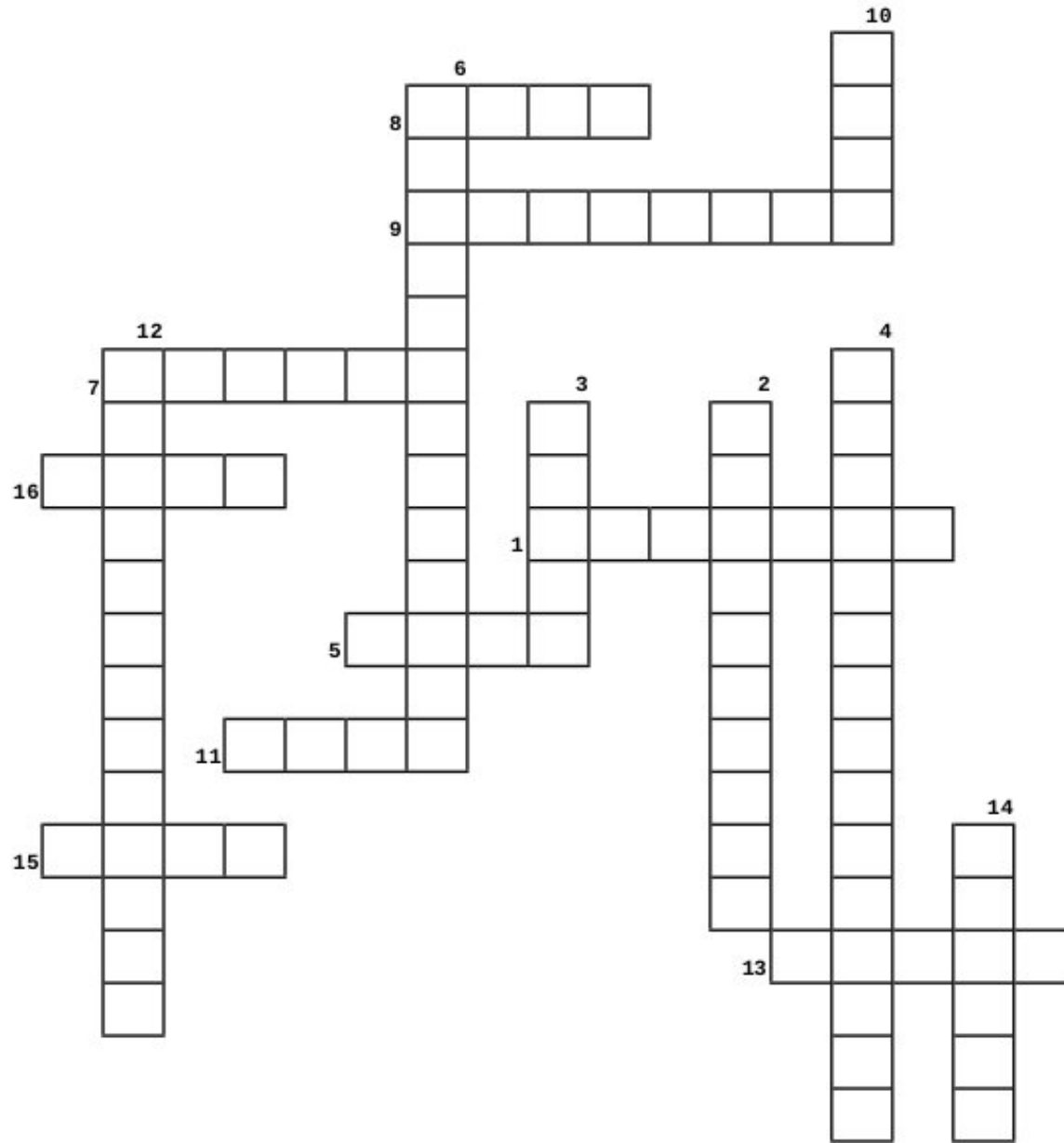
E D Q Y Y G P D J P P P A I N T B R U S H F P N C W O V L A
 V T J L E Z E E H E D S O M Q A Q N F Z T P A O O B Z N P U
 X A Q C T Y O E R R T P W W P O Z V D M O C P G C G H Q K D
 B P D M H T I S K A S P E H L N Z R E G P A N P O D E V O Q
 A F N I M D P V Y D Q J O N V P P S Z B C B X E L I G V R B
 J L K G A E S V J R G V B R C L R A F I Y V Q R O M E G M A
 W A O Z C E Z M J I D L L U C I Q D T S P B L U R I R T P F
 C P O T S F E K U U B Z G B Y C L Y C H D K S S P M K B S G
 U U I I F L E Z D D Q B E L E G G A F L S N K A I Q Z U L V
 O V W J S N O O F P G I W U H R L O F E M J C E C B D P O Q
 E X N U W E D O A I K E A U Z E M X H U R R L M K O L E Q I
 C C S J I G I M T M Y F G C W S T C D H Z C C D E R S E J O
 F P D R E U B K Z T U C F L P A R W T Z I Z U K R L M J N A
 B C K K Y C W I L U R X M K X R Y W E S D X Y F O O M G L D
 I G G G J P L F U H E R F R L E E S X B N P T S A Q J P E F
 T T H X V Z L T R W O V M Z R O T A T E C C J E E J T A F I
 X G F Y X X O Q U F V G G X T C H S F K N O V E R L A Y F H
 M J R C I B L N S Z I R B E Y E N F R F N A G H P N E W X U
 F V J A T B U N H W D A R L Z T C E L E S E L G N A T C E R
 R H Y K U Q A W A N Y D S J O H P I O B V A D Y B H F C T D
 O K B W F R K S Q P J I W P I Q P Q C L O N E G D I J B O H
 O V J C T C A F V T C E L E S E S P I L L E M L P A B C N Q
 J G O E Q H T B E S Y N D S G J U F V P B O N E I A Z Y M X
 O I G N Z S G W L D J T P X R A Y Z X W V P C R O A T E C R
 W A H B I A E I G P C L U D Z D T I C E V A B Y J S C N B R
 C D D A J W F D H W W U L Z W J X V A B E R V I G R Q Q Z O
 M E N C R X A X E O G S F E X I B G K H U U J X X R B F P Z
 C O D Y A W G I P J Z V S I W T V F W S G M X J A H A W N Q
 M Y P G Z I P C G Y S V R E J H Y J H L G Q B K F G F H K E
 H L L I F T E K C U B J T I C O B L U R U W O P E F H D Z F

- Airbrush
- Blend
- Blur (2 places!)
- Bucket Fill
- Burn
- Cage Transform
- Clone
- Color Picker
- Crop
- Dodge
- Ellipse Select
- Eraser
- Flip
- Fuzzy Select
- Gradient
- Measure
- Move
- Opacity
- Overlay
- Paintbrush
- Paths
- Pencil
- Perspective
- Rectangle Select
- Rotate
- Scale
- Smudge
- Text
- Zoom

[Download Puzzle Solutions Here](#)



GIMP Terms Crossword



1. How much you can see through an item
2. You can use this to make a large area a different color without using the paintbrush
3. Makes an exact copy (Or many exact copies)
4. Outlines a rectangular area
5. The tool that lets you relocate an item somewhere else
6. Changes perspective and shape
7. Removed the color from an area and replaces it with transparency
8. Outline only the area you need and dispose of the rest
9. This is a multicolored pattern sometimes resembling a rainbow
10. Allows you to add words to your creation
11. Make your creation larger or smaller
12. Select an oval area to manipulate
13. In Gimp, this tool makes gradients
14. Draws lines
15. Reverse your object vertically or horizontally
16. This tool can put shadows in or soften edges

[Download Puzzle Solutions Here](#)



More Screenshot Showcase



Posted by YouCanToo, on October 3, 2016, running KDE.



Posted by HΞRİTζ_, on October 3, 2016, running KDE.



Posted by Agust, on October 8, 2016, running e20.



Posted by jogurtmen, on October 15, 2016, running KDE.